

HHEX Antibody (C-term)
Affinity Purified Rabbit Polyclonal Antibody (Pab)
Catalog # AP18467b**Specification**

HHEX Antibody (C-term) - Product Information

Application	WB,E
Primary Accession	Q03014
Other Accession	NP_002720.1
Reactivity	Human, Mouse
Host	Rabbit
Clonality	Polyclonal
Isotype	Rabbit IgG
Calculated MW	30022
Antigen Region	244-270

HHEX Antibody (C-term) - Additional Information**Gene ID** 3087**Other Names**

Hematopoietically-expressed homeobox protein HHEX, Homeobox protein HEX, Homeobox protein PRH, HHEX, HEX, PRH, PRHX

Target/Specificity

This HHEX antibody is generated from rabbits immunized with a KLH conjugated synthetic peptide between 244-270 amino acids from the C-terminal region of human HHEX.

Dilution

WB~~1:1000

E~~Use at an assay dependent concentration.

Format

Purified polyclonal antibody supplied in PBS with 0.09% (W/V) sodium azide. This antibody is purified through a protein A column, followed by peptide affinity purification.

Storage

Maintain refrigerated at 2-8°C for up to 2 weeks. For long term storage store at -20°C in small aliquots to prevent freeze-thaw cycles.

Precautions

HHEX Antibody (C-term) is for research use only and not for use in diagnostic or therapeutic procedures.

HHEX Antibody (C-term) - Protein Information**Name** HHEX

Synonyms HEX, PRH, PRHX

Function Recognizes the DNA sequence 5'-ATTAA-3' (By similarity). Transcriptional repressor (By similarity). Activator of WNT-mediated transcription in conjunction with CTNNB1 (PubMed:[20028982](#)). Establishes anterior identity at two levels; acts early to enhance canonical WNT- signaling by repressing expression of TLE4, and acts later to inhibit NODAL-signaling by directly targeting NODAL (By similarity). Inhibits EIF4E-mediated mRNA nuclear export (PubMed:[12554669](#)). May play a role in hematopoietic differentiation (PubMed:[8096636](#)).

Cellular Location

Nucleus {ECO:0000250|UniProtKB:P43120}. Nucleus, nuclear body. Cytoplasm

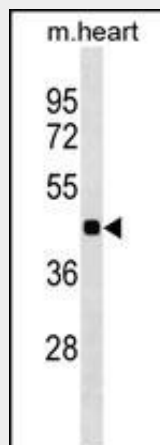
Tissue Location

Liver and promyelocytic leukemia cell line HL-60.

HHEX Antibody (C-term) - Protocols

Provided below are standard protocols that you may find useful for product applications.

- [Western Blot](#)
- [Blocking Peptides](#)
- [Dot Blot](#)
- [Immunohistochemistry](#)
- [Immunofluorescence](#)
- [Immunoprecipitation](#)
- [Flow Cytometry](#)
- [Cell Culture](#)

HHEX Antibody (C-term) - Images

HHEX Antibody (C-term) (Cat. #AP18467b) western blot analysis in mouse heart tissue lysates (35ug/lane). This demonstrates the HHEX antibody detected the HHEX protein (arrow).

HHEX Antibody (C-term) - Background

This gene encodes a member of the homeobox family of transcription factors, many of which are involved in developmental processes. Expression in specific hematopoietic lineages suggests that this protein may play a role in hematopoietic differentiation.

HHEX Antibody (C-term) - References

Heni, M., et al. Diabetes 59(12):3247-3252(2010)
Pechlivanis, S., et al. Arterioscler. Thromb. Vasc. Biol. 30(9):1867-1872(2010)
Reitz, C., et al. Neurobiol. Aging (2010) In press :
Gaudet, M.M., et al. Cancer Epidemiol. Biomarkers Prev. 19(8):2106-2109(2010)
Gupta, V., et al. Ann. Hum. Genet. 74(4):361-368(2010)