

RRBP1 Antibody (C-term)
Affinity Purified Rabbit Polyclonal Antibody (Pab)
Catalog # AP18468b**Specification**

RRBP1 Antibody (C-term) - Product Information

Application	WB,E
Primary Accession	O9P2E9
Other Accession	NP_004578.2
Reactivity	Human
Host	Rabbit
Clonality	Polyclonal
Isotype	Rabbit IgG
Calculated MW	152456
Antigen Region	1327-1355

RRBP1 Antibody (C-term) - Additional Information**Gene ID** 6238**Other Names**

Ribosome-binding protein 1, 180 kDa ribosome receptor homolog, RRp, ES/130-related protein, Ribosome receptor protein, RRBP1, KIAA1398

Target/Specificity

This RRBP1 antibody is generated from rabbits immunized with a KLH conjugated synthetic peptide between 1327-1355 amino acids from the C-terminal region of human RRBP1.

Dilution

WB~~1:1000

E~~Use at an assay dependent concentration.

Format

Purified polyclonal antibody supplied in PBS with 0.09% (W/V) sodium azide. This antibody is purified through a protein A column, followed by peptide affinity purification.

Storage

Maintain refrigerated at 2-8°C for up to 2 weeks. For long term storage store at -20°C in small aliquots to prevent freeze-thaw cycles.

Precautions

RRBP1 Antibody (C-term) is for research use only and not for use in diagnostic or therapeutic procedures.

RRBP1 Antibody (C-term) - Protein Information**Name** RRBP1

Synonyms KIAA1398

Function Acts as a ribosome receptor and mediates interaction between the ribosome and the endoplasmic reticulum membrane.

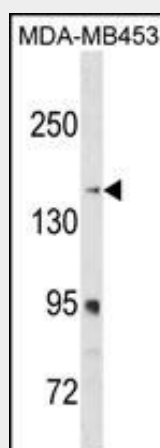
Cellular Location

Endoplasmic reticulum membrane; Single-pass type III membrane protein

RRBP1 Antibody (C-term) - Protocols

Provided below are standard protocols that you may find useful for product applications.

- [Western Blot](#)
- [Blocking Peptides](#)
- [Dot Blot](#)
- [Immunohistochemistry](#)
- [Immunofluorescence](#)
- [Immunoprecipitation](#)
- [Flow Cytometry](#)
- [Cell Culture](#)

RRBP1 Antibody (C-term) - Images

RRBP1 Antibody (C-term) (Cat. #AP18468b) western blot analysis in MDA-MB453 cell line lysates (35ug/lane). This demonstrates the RRBP1 antibody detected the RRBP1 protein (arrow).

RRBP1 Antibody (C-term) - Background

Analysis of cDNA clones indicates that ribosome binding protein 1 may exist in different forms due to removal of tandem repeats, or partial intraexonic splicing of RRBP1. The form presented here is lacking the canine p180 ribosome-binding domain, NQGKKAEGAQ, which is tandemly repeated close to the N-terminus in other forms that haven't been fully characterized. RRBP1 has been excluded as a candidate gene in the cause of Alagille syndrome. Alternate splicing results in multiple transcript variants.

RRBP1 Antibody (C-term) - References

Ueno, T., et al. J. Biol. Chem. 285(39):29941-29950(2010)

Ueno, T., et al. Exp. Cell Res. 316(3):329-340(2010)
Krasnov, G.S., et al. Mol. Biol. (Mosk.) 43(2):348-356(2009)
Benyamini, P., et al. Mol. Biol. Cell 20(2):732-744(2009)
Bai, J.Z., et al. Cell Biol. Int. 32(5):473-483(2008)