

HMBOX1 Antibody (Center)
Affinity Purified Rabbit Polyclonal Antibody (Pab)
Catalog # AP18472c**Specification**

HMBOX1 Antibody (Center) - Product Information

Application	WB,E
Primary Accession	Q6NT76
Other Accession	Q8BJA3 , NP_001129198.1
Reactivity	Human, Mouse
Host	Rabbit
Clonality	Polyclonal
Isotype	Rabbit IgG
Calculated MW	47278
Antigen Region	197-223

HMBOX1 Antibody (Center) - Additional Information**Gene ID** 79618**Other Names**

Homeobox-containing protein 1, HMBOX1

Target/Specificity

This HMBOX1 antibody is generated from rabbits immunized with a KLH conjugated synthetic peptide between 197-223 amino acids from the Central region of human HMBOX1.

Dilution

WB~~1:1000

E~~Use at an assay dependent concentration.

Format

Purified polyclonal antibody supplied in PBS with 0.09% (W/V) sodium azide. This antibody is purified through a protein A column, followed by peptide affinity purification.

Storage

Maintain refrigerated at 2-8°C for up to 2 weeks. For long term storage store at -20°C in small aliquots to prevent freeze-thaw cycles.

Precautions

HMBOX1 Antibody (Center) is for research use only and not for use in diagnostic or therapeutic procedures.

HMBOX1 Antibody (Center) - Protein Information**Name** HMBOX1 {ECO:0000303|PubMed:16825764}**Function** Binds directly to 5'-TTAGGG-3' repeats in telomeric DNA (PubMed:[23685356](#),

PubMed:[23813958](#)). Associates with the telomerase complex at sites of active telomere processing and positively regulates telomere elongation (PubMed:[23685356](#)). Important for TERT binding to chromatin, indicating a role in recruitment of the telomerase complex to telomeres (By similarity). Also plays a role in the alternative lengthening of telomeres (ALT) pathway in telomerase-negative cells where it promotes formation and/or maintenance of ALT-associated promyelocytic leukemia bodies (APBs) (PubMed:[23813958](#)). Enhances formation of telomere C-circles in ALT cells, suggesting a possible role in telomere recombination (PubMed:[23813958](#)). Might also be involved in the DNA damage response at telomeres (PubMed:[23813958](#)).

Cellular Location

Nucleus. Cytoplasm. Chromosome, telomere. Nucleus, Cajal body. Nucleus, PML body. Note=Predominantly detected in cytoplasm (PubMed:[16825764](#), PubMed:[19728927](#)). Localizes in a dynamic manner to actively processed telomeres (PubMed:[23685356](#)). Localizes to the periphery of Cajal bodies (PubMed:[23685356](#)). Associates with PML nuclear bodies in telomerase-negative cells (PubMed:[23813958](#))

Tissue Location

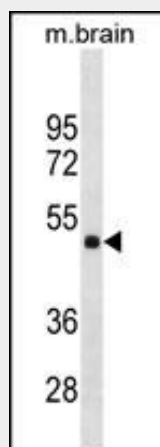
Ubiquitous. Detected in pancreas, brain, spleen, placenta, prostate, thymus, liver, heart, bone marrow, skeletal muscle, stomach, uterus, testis, kidney, ovary, colon, lung, cardiac muscle and thyroid gland.

HMBOX1 Antibody (Center) - Protocols

Provided below are standard protocols that you may find useful for product applications.

- [Western Blot](#)
- [Blocking Peptides](#)
- [Dot Blot](#)
- [Immunohistochemistry](#)
- [Immunofluorescence](#)
- [Immunoprecipitation](#)
- [Flow Cytometry](#)
- [Cell Culture](#)

HMBOX1 Antibody (Center) - Images



HMBOX1 Antibody (Center) (Cat. #AP18472c) western blot analysis in mouse brain tissue lysates (35ug/lane). This demonstrates the HMBOX1 antibody detected the HMBOX1 protein (arrow).

HMBOX1 Antibody (Center) - Background

Transcription factor. Isoform 1 acts as a transcriptional repressor. Isoform 4 has very low activity as a transcriptional repressor.

HMBOX1 Antibody (Center) - References

Rose, J.E., et al. Mol. Med. 16 (7-8), 247-253 (2010) :
Zhang, M., et al. Mol. Biol. Rep. 37(6):2767-2772(2010)
Dai, J., et al. Cell. Mol. Immunol. 6(4):261-268(2009)
De Marco, A., et al. Retrovirology 5, 98 (2008) :
Chen, S., et al. Cytogenet. Genome Res. 114(2):131-136(2006)