

**CD1B Antibody (N-term)**  
**Affinity Purified Rabbit Polyclonal Antibody (Pab)**  
**Catalog # AP18475a**

**Specification**

---

**CD1B Antibody (N-term) - Product Information**

Application	WB,E
Primary Accession	<a href="#">P29016</a>
Other Accession	<a href="#">NP_001755.1</a>
Reactivity	Human
Host	Rabbit
Clonality	Polyclonal
Isotype	Rabbit IgG
Calculated MW	36939
Antigen Region	57-85

**CD1B Antibody (N-term) - Additional Information**

**Gene ID** 910

**Other Names**

T-cell surface glycoprotein CD1b, CD1b, CD1B

**Target/Specificity**

This CD1B antibody is generated from rabbits immunized with a KLH conjugated synthetic peptide between 57-85 amino acids from the N-terminal region of human CD1B.

**Dilution**

WB~~1:1000

**Format**

Purified polyclonal antibody supplied in PBS with 0.09% (W/V) sodium azide. This antibody is purified through a protein A column, followed by peptide affinity purification.

**Storage**

Maintain refrigerated at 2-8°C for up to 2 weeks. For long term storage store at -20°C in small aliquots to prevent freeze-thaw cycles.

**Precautions**

CD1B Antibody (N-term) is for research use only and not for use in diagnostic or therapeutic procedures.

**CD1B Antibody (N-term) - Protein Information**

**Name** CD1B

**Function** Antigen-presenting protein that binds self and non-self lipid and glycolipid antigens and presents them to T-cell receptors on natural killer T-cells.

### Cellular Location

Cell membrane; Single-pass type I membrane protein. Endosome membrane; Single-pass type I membrane protein. Lysosome membrane; Single-pass type I membrane protein. Note=Subject to intracellular trafficking between the cell membrane, endosomes and lysosomes.

### Tissue Location

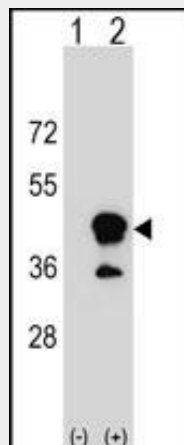
Expressed on cortical thymocytes, on certain T-cell leukemias, and in various other tissues

### CD1B Antibody (N-term) - Protocols

Provided below are standard protocols that you may find useful for product applications.

- [Western Blot](#)
- [Blocking Peptides](#)
- [Dot Blot](#)
- [Immunohistochemistry](#)
- [Immunofluorescence](#)
- [Immunoprecipitation](#)
- [Flow Cytometry](#)
- [Cell Culture](#)

### CD1B Antibody (N-term) - Images



Western blot analysis of CD1B (arrow) using rabbit polyclonal CD1B Antibody (N-term) (Cat. #AP18475a). 293 cell lysates (2 ug/lane) either nontransfected (Lane 1) or transiently transfected (Lane 2) with the CD1B gene.

### CD1B Antibody (N-term) - Background

This gene encodes a member of the CD1 family of transmembrane glycoproteins, which are structurally related to the major histocompatibility complex (MHC) proteins and form heterodimers with beta-2-microglobulin. The CD1 proteins mediate the presentation of primarily lipid and glycolipid antigens of self or microbial origin to T cells. The human genome contains five CD1 family genes organized in a cluster on chromosome 1. The CD1 family members are thought to differ in their cellular localization and specificity for particular lipid ligands. The protein encoded by this gene localizes to late endosomes and lysosomes via a tyrosine-based motif in the cytoplasmic tail, and requires

vesicular acidification to bind lipid antigens. [provided by RefSeq].

#### **CD1B Antibody (N-term) - References**

Davila, S., et al. Genes Immun. 11(3):232-238(2010)  
Felio, K., et al. J. Exp. Med. 206(11):2497-2509(2009)  
Guiard, J., et al. J. Immunol. 182(11):7030-7037(2009)  
Cui, Y., et al. Biol. Direct 4, 47 (2009) :  
Zajonc, D.M., et al. Proc. Natl. Acad. Sci. U.S.A. 105(46):17925-17930(2008)