

**BTG4 Antibody (C-term)**  
**Affinity Purified Rabbit Polyclonal Antibody (Pab)**  
**Catalog # AP18501b****Specification**

---

**BTG4 Antibody (C-term) - Product Information**

Application	WB,E
Primary Accession	<a href="#">O9NY30</a>
Other Accession	<a href="#">NP_060059.1</a>
Reactivity	Human
Host	Rabbit
Clonality	Polyclonal
Isotype	Rabbit IgG
Calculated MW	25970
Antigen Region	142-169

**BTG4 Antibody (C-term) - Additional Information****Gene ID** 54766**Other Names**

Protein BTG4, BTG family member 4, Protein PC3b, BTG4, PC3B

**Target/Specificity**

This BTG4 antibody is generated from rabbits immunized with a KLH conjugated synthetic peptide between 142-169 amino acids from the C-terminal region of human BTG4.

**Dilution**

WB~~1:2000

**Format**

Purified polyclonal antibody supplied in PBS with 0.09% (W/V) sodium azide. This antibody is purified through a protein A column, followed by peptide affinity purification.

**Storage**

Maintain refrigerated at 2-8°C for up to 2 weeks. For long term storage store at -20°C in small aliquots to prevent freeze-thaw cycles.

**Precautions**

BTG4 Antibody (C-term) is for research use only and not for use in diagnostic or therapeutic procedures.

**BTG4 Antibody (C-term) - Protein Information****Name** BTG4**Synonyms** PC3B

**Function** Adapter protein that bridges CNOT7, a catalytic subunit of the CCR4-NOT complex, to EIF4E (By similarity). Facilitates maternal mRNAs decay during the maturation of oocytes and in the fertilized egg, and is required for the maternal-zygotic transition (MZT), zygotic cleavage and initiation of embryonic development (PubMed:[32502391](#)).

**Tissue Location**

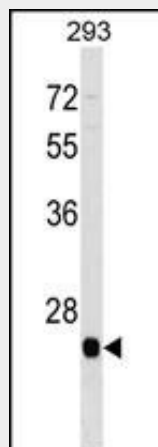
Expressed in oocytes after germinal vesicle breakdown (PubMed:32502391). Expressed in testis and in olfactory epithelium.

**BTG4 Antibody (C-term) - Protocols**

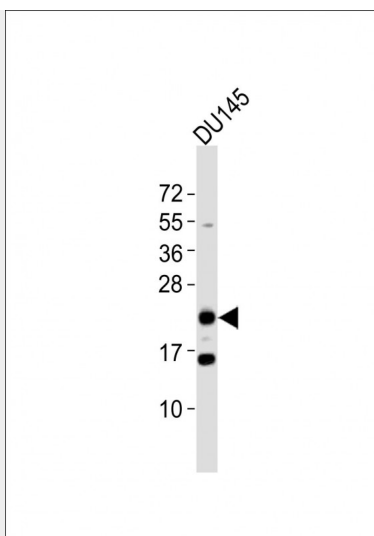
Provided below are standard protocols that you may find useful for product applications.

- [Western Blot](#)
- [Blocking Peptides](#)
- [Dot Blot](#)
- [Immunohistochemistry](#)
- [Immunofluorescence](#)
- [Immunoprecipitation](#)
- [Flow Cytometry](#)
- [Cell Culture](#)

**BTG4 Antibody (C-term) - Images**



BTG4 Antibody (C-term) (Cat. #AP18501b) western blot analysis in 293 cell line lysates (35ug/lane). This demonstrates the BTG4 antibody detected the BTG4 protein (arrow).



Anti-BTG4 Antibody (C-term) at 1:2000 dilution + DU145 whole cell lysates. Lysates/proteins at 20 µg per lane. Secondary Goat Anti-Rabbit IgG, (H+L), Peroxidase conjugated at 1/10000 dilution. Predicted band size : 26 kDa. Blocking/Dilution buffer: 5% NFDM/TBST.

#### **BTG4 Antibody (C-term) - Background**

The protein encoded by this gene is a member of the BTG/Tob family. This family has structurally related proteins that appear to have antiproliferative properties. This encoded protein can induce G1 arrest in the cell cycle.

#### **BTG4 Antibody (C-term) - References**

Xu, Y., et al. Int. J. Cancer (2010) In press :  
Dong, W., et al. Biochem. Biophys. Res. Commun. 387(1):132-138(2009)  
Toyota, M., et al. Cancer Res. 68(11):4123-4132(2008)  
Auer, R.L., et al. Genes Chromosomes Cancer 43(1):1-10(2005)  
Yoshida, Y., et al. Jpn. J. Cancer Res. 92(6):592-596(2001)