

**PGLYRP4 Antibody (Center)**  
**Affinity Purified Rabbit Polyclonal Antibody (Pab)**  
**Catalog # AP18508c**

**Specification**

---

**PGLYRP4 Antibody (Center) - Product Information**

Application	WB,E
Primary Accession	<a href="#">O96LB8</a>
Other Accession	<a href="#">NP_065126.2</a>
Reactivity	Human
Host	Rabbit
Clonality	Polyclonal
Isotype	Rabbit IgG
Calculated MW	40620
Antigen Region	242-268

**PGLYRP4 Antibody (Center) - Additional Information**

**Gene ID** 57115

**Other Names**

Peptidoglycan recognition protein 4, Peptidoglycan recognition protein I-beta, PGLYRPIbeta, PGRP-I-beta, Peptidoglycan recognition protein intermediate beta, PGLYRP4, PGRPIB

**Target/Specificity**

This PGLYRP4 antibody is generated from rabbits immunized with a KLH conjugated synthetic peptide between 242-268 amino acids from the Central region of human PGLYRP4.

**Dilution**

WB~~1:1000

E~~Use at an assay dependent concentration.

**Format**

Purified polyclonal antibody supplied in PBS with 0.09% (W/V) sodium azide. This antibody is purified through a protein A column, followed by peptide affinity purification.

**Storage**

Maintain refrigerated at 2-8°C for up to 2 weeks. For long term storage store at -20°C in small aliquots to prevent freeze-thaw cycles.

**Precautions**

PGLYRP4 Antibody (Center) is for research use only and not for use in diagnostic or therapeutic procedures.

**PGLYRP4 Antibody (Center) - Protein Information**

**Name** PGLYRP4

**Synonyms** PGRPIB

**Function** Pattern receptor that binds to murein peptidoglycans (PGN) of Gram-positive bacteria. Has bactericidal activity towards Gram-positive bacteria. May kill Gram-positive bacteria by interfering with peptidoglycan biosynthesis. Also binds to Gram-negative bacteria, and has bacteriostatic activity towards Gram-negative bacteria. Plays a role in innate immunity.

**Cellular Location**

Secreted.

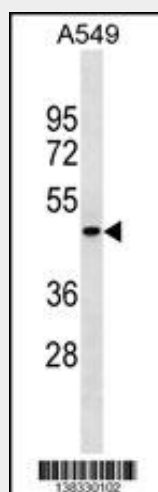
**Tissue Location**

Detected in skin epidermis, eccrine sweat glands and ducts, mucous cells in the submandibular salivary gland, mucous cells in the throat, ciliary body epithelial cells of the eye, small intestine, colon, stomach and in mature epithelial cells of the tongue (at protein level). High expression in skin and esophagus. Expressed also to a much lesser extent in the tonsils and thymus

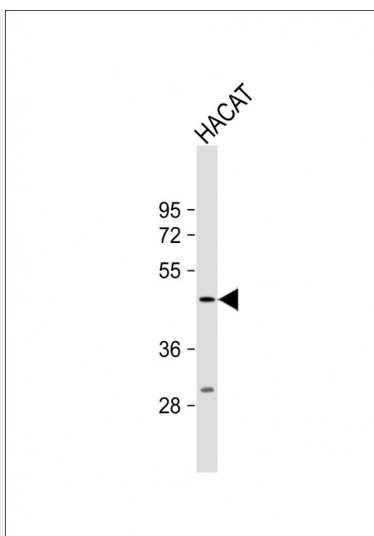
**PGLYRP4 Antibody (Center) - Protocols**

Provided below are standard protocols that you may find useful for product applications.

- [Western Blot](#)
- [Blocking Peptides](#)
- [Dot Blot](#)
- [Immunohistochemistry](#)
- [Immunofluorescence](#)
- [Immunoprecipitation](#)
- [Flow Cytometry](#)
- [Cell Culture](#)

**PGLYRP4 Antibody (Center) - Images**

PGLYRP4 Antibody (Center) (Cat. #AP18508c) western blot analysis in A549 cell line lysates (35ug/lane). This demonstrates the PGLYRP4 antibody detected the PGLYRP4 protein (arrow).



Anti-PGLYRP4 Antibody (Center) at 1:1000 dilution + HACAT whole cell lysate Lysates/proteins at 20 µg per lane. Secondary Goat Anti-Rabbit IgG, (H+L), Peroxidase conjugated at 1/10000 dilution. Predicted band size : 41 kDa Blocking/Dilution buffer: 5% NFDM/TBST.

#### **PGLYRP4 Antibody (Center) - Background**

Peptidoglycan recognition proteins, such as PGRPI-beta, are part of the innate immune system and recognize peptidoglycan, a ubiquitous component of bacterial cell walls.

#### **PGLYRP4 Antibody (Center) - References**

Rose, J.E., et al. Mol. Med. 16 (7-8), 247-253 (2010) :  
Davila, S., et al. Genes Immun. 11(3):232-238(2010)  
Cho, S., et al. Proc. Natl. Acad. Sci. U.S.A. 104(21):8761-8766(2007)  
Lu, X., et al. J. Biol. Chem. 281(9):5895-5907(2006)  
Sun, C., et al. Hum. Genet. 119 (1-2), 113-125 (2006) :