

SNX30 Antibody (C-term)
Affinity Purified Rabbit Polyclonal Antibody (Pab)
Catalog # AP18518b**Specification**

SNX30 Antibody (C-term) - Product Information

Application	WB,E
Primary Accession	Q5VWJ9
Other Accession	NP_001013012.1
Reactivity	Human, Mouse
Host	Rabbit
Clonality	Polyclonal
Isotype	Rabbit IgG
Calculated MW	49677
Antigen Region	346-374

SNX30 Antibody (C-term) - Additional Information**Gene ID** 401548**Other Names**

Sorting nexin-30, SNX30

Target/Specificity

This SNX30 antibody is generated from rabbits immunized with a KLH conjugated synthetic peptide between 346-374 amino acids from the C-terminal region of human SNX30.

Dilution

WB~~1:1000

E~~Use at an assay dependent concentration.

Format

Purified polyclonal antibody supplied in PBS with 0.09% (W/V) sodium azide. This antibody is purified through a protein A column, followed by peptide affinity purification.

Storage

Maintain refrigerated at 2-8°C for up to 2 weeks. For long term storage store at -20°C in small aliquots to prevent freeze-thaw cycles.

Precautions

SNX30 Antibody (C-term) is for research use only and not for use in diagnostic or therapeutic procedures.

SNX30 Antibody (C-term) - Protein Information**Name** SNX30 {ECO:0000303|PubMed:32513819, ECO:0000312|HGNC:HGNC:23685}**Function** Involved in the regulation of endocytosis and in several stages of intracellular trafficking

(PubMed:[32513819](#)). Together with SNX4, involved in autophagosome assembly
(PubMed:[32513819](#)).

Cellular Location

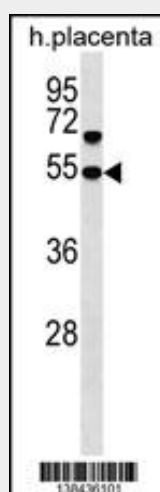
Early endosome membrane; Peripheral membrane protein {ECO:0000250|UniProtKB:O95219};
Cytoplasmic side {ECO:0000250|UniProtKB:O95219}

SNX30 Antibody (C-term) - Protocols

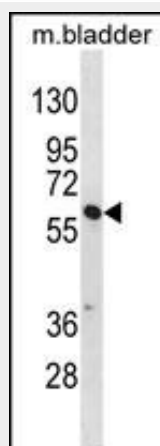
Provided below are standard protocols that you may find useful for product applications.

- [Western Blot](#)
- [Blocking Peptides](#)
- [Dot Blot](#)
- [Immunohistochemistry](#)
- [Immunofluorescence](#)
- [Immunoprecipitation](#)
- [Flow Cytometry](#)
- [Cell Culture](#)

SNX30 Antibody (C-term) - Images



SNX30 Antibody (C-term) (Cat. #AP18518b) western blot analysis in human placenta tissue lysates (35ug/lane). This demonstrates the SNX30 antibody detected the SNX30 protein (arrow).



SNX30 Antibody (C-term) (Cat. #AP18518b) western blot analysis in mouse bladder tissue lysates (35ug/lane). This demonstrates the SNX30 antibody detected the SNX30 protein (arrow).

SNX30 Antibody (C-term) - Background

SNX30 may be involved in several stages of intracellular trafficking (By similarity).

SNX30 Antibody (C-term) - References

Letra, A., et al. Am. J. Med. Genet. A 152A (7), 1701-1710 (2010) :