

**Erythropoietin Antibody**  
**Affinity Purified Rabbit Polyclonal Antibody (Pab)**  
**Catalog # AP18527a****Specification**

---

**Erythropoietin Antibody - Product Information**

Application	WB,E
Primary Accession	<a href="#">P01588</a>
Other Accession	<a href="#">NP_000790</a>
Reactivity	Human, Mouse
Host	Rabbit
Clonality	Polyclonal
Isotype	Rabbit IgG

**Erythropoietin Antibody - Additional Information****Gene ID** 2056**Other Names**

Erythropoietin, Epoetin, EPO

**Target/Specificity**

This EPO antibody is generated from rabbits immunized with a recombinant protein of human EPO.

**Dilution**

WB~~1:500

E~~Use at an assay dependent concentration.

**Format**

Purified polyclonal antibody supplied in PBS with 0.09% (W/V) sodium azide. This antibody is purified through a protein A column, followed by peptide affinity purification.

**Storage**

Maintain refrigerated at 2-8°C for up to 2 weeks. For long term storage store at -20°C in small aliquots to prevent freeze-thaw cycles.

**Precautions**

Erythropoietin Antibody is for research use only and not for use in diagnostic or therapeutic procedures.

**Erythropoietin Antibody - Protein Information****Name** EPO

**Function** Hormone involved in the regulation of erythrocyte proliferation and differentiation and the maintenance of a physiological level of circulating erythrocyte mass (PubMed:[28283061](#)). Binds to EPOR leading to EPOR dimerization and JAK2 activation thereby activating specific downstream effectors, including STAT1 and STAT3 (PubMed:[9774108](#)).

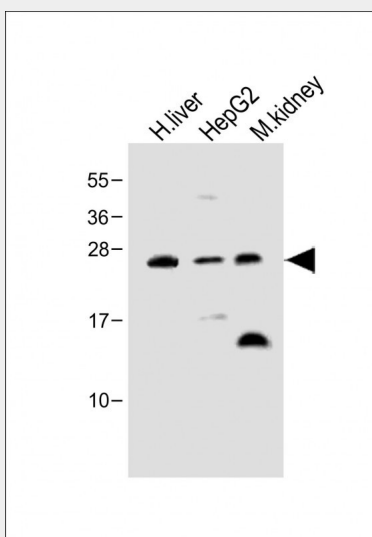
**Cellular Location**  
Secreted.**Tissue Location**

Produced by kidney or liver of adult mammals and by liver of fetal or neonatal mammals.

**Erythropoietin Antibody - Protocols**

Provided below are standard protocols that you may find useful for product applications.

- [Western Blot](#)
- [Blocking Peptides](#)
- [Dot Blot](#)
- [Immunohistochemistry](#)
- [Immunofluorescence](#)
- [Immunoprecipitation](#)
- [Flow Cytometry](#)
- [Cell Culture](#)

**Erythropoietin Antibody - Images**

All lanes : Anti-Erythropoietin Antibody at 1:500 dilution Lane 1: Human liver lysate Lane 2: HepG2 whole cell lysate Lane 3: Mouse kidney lysate Lysates/proteins at 20 µg per lane. Secondary Goat Anti-Rabbit IgG, (H+L), Peroxidase conjugated at 1/10000 dilution. Predicted band size : 21 kDa Blocking/Dilution buffer: 5% NFD/MTBST.

**Erythropoietin Antibody - Background**

This gene is a member of the EPO/TPO family and encodes a secreted, glycosylated cytokine composed of four alpha helical bundles. The protein is found in the plasma and regulates red cell production by promoting erythroid differentiation and initiating hemoglobin synthesis. This protein also has neuroprotective activity against a variety of potential brain injuries and antiapoptotic functions in several tissue types. [provided by RefSeq].

**Erythropoietin Antibody - References**

- Bailey, S.D., et al. Diabetes Care 33(10):2250-2253(2010)  
Kristensen, P.L., et al. Eur. J. Endocrinol. 163(3):391-398(2010)  
Kim, M.H., et al. Mol. Biol. (Mosk.) 44(4):656-663(2010)  
Carraway, M.S., et al. Circ. Res. 106(11):1722-1730(2010)  
Shi, Z., et al. Mol. Cancer Res. 8(4):615-626(2010)