

CDH11 Antibody (C-term)
Affinity Purified Rabbit Polyclonal Antibody (Pab)
Catalog # AP18528B

Specification

CDH11 Antibody (C-term) - Product Information

Application	WB,E
Primary Accession	P55287
Other Accession	P55288 , NP_001788
Reactivity	Human, Mouse
Host	Rabbit
Clonality	Polyclonal
Isotype	Rabbit IgG
Calculated MW	87965
Antigen Region	622-650

CDH11 Antibody (C-term) - Additional Information

Gene ID 1009

Other Names

Cadherin-11, OSF-4, Osteoblast cadherin, OB-cadherin, CDH11

Target/Specificity

This CDH11 antibody is generated from rabbits immunized with a KLH conjugated synthetic peptide between 622-650 amino acids from the C-terminal region of human CDH11.

Dilution

WB~~1:1000

E~~Use at an assay dependent concentration.

Format

Purified polyclonal antibody supplied in PBS with 0.09% (W/V) sodium azide. This antibody is purified through a protein A column, followed by peptide affinity purification.

Storage

Maintain refrigerated at 2-8°C for up to 2 weeks. For long term storage store at -20°C in small aliquots to prevent freeze-thaw cycles.

Precautions

CDH11 Antibody (C-term) is for research use only and not for use in diagnostic or therapeutic procedures.

CDH11 Antibody (C-term) - Protein Information

Name CDH11

Function Cadherins are calcium-dependent cell adhesion proteins. They preferentially interact

with themselves in a homophilic manner in connecting cells; cadherins may thus contribute to the sorting of heterogeneous cell types. Required for proper focal adhesion assembly (PubMed:[33811546](#)). Involved in the regulation of cell migration (PubMed:[33811546](#)).

Cellular Location

Cell membrane; Single-pass type I membrane protein

Tissue Location

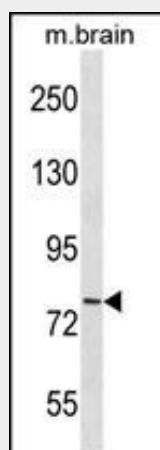
Expressed mainly in brain but also found in other tissues. Expressed in neuroblasts. In the embryo from 67 to 72 days of gestation, detected at high levels in facial mesenchyme including the central palatal mesenchyme, dental mesenchyme, the eye and optic muscle, and the tongue (at protein level) (PubMed:[33811546](#))

CDH11 Antibody (C-term) - Protocols

Provided below are standard protocols that you may find useful for product applications.

- [Western Blot](#)
- [Blocking Peptides](#)
- [Dot Blot](#)
- [Immunohistochemistry](#)
- [Immunofluorescence](#)
- [Immunoprecipitation](#)
- [Flow Cytometry](#)
- [Cell Culture](#)

CDH11 Antibody (C-term) - Images



CDH11 Antibody (C-term) (Cat. #AP18528b) western blot analysis in mouse brain tissue lysates (35ug/lane). This demonstrates the CDH11 antibody detected the CDH11 protein (arrow).

CDH11 Antibody (C-term) - Background

This gene encodes a type II classical cadherin from the cadherin superfamily, integral membrane proteins that mediate calcium-dependent cell-cell adhesion. Mature cadherin proteins are composed of a large N-terminal extracellular domain, a single membrane-spanning domain, and a small, highly conserved C-terminal cytoplasmic domain. Type II (atypical) cadherins are defined based on their lack of a HAV cell adhesion recognition sequence specific

to type I cadherins. Expression of this particular cadherin in osteoblastic cell lines, and its upregulation during differentiation, suggests a specific function in bone development and maintenance.

CDH11 Antibody (C-term) - References

Rose, J.E., et al. Mol. Med. 16 (7-8), 247-253 (2010) :
Sachdeva, M., et al. Cancer Res. 70(1):378-387(2010)
Canova, C., et al. Cancer Res. 69(7):2956-2965(2009)
Farina, A.K., et al. PLoS ONE 4 (3), E4797 (2009) :
Brieger, J., et al. APMIS 116(12):1050-1057(2008)