

ARMCX3 Antibody (C-term)
Affinity Purified Rabbit Polyclonal Antibody (Pab)
Catalog # AP18534b**Specification**

ARMCX3 Antibody (C-term) - Product Information

Application	WB,E
Primary Accession	O9UH62
Other Accession	NP_057691.1
Reactivity	Human
Host	Rabbit
Clonality	Polyclonal
Isotype	Rabbit IgG
Calculated MW	42501
Antigen Region	299-325

ARMCX3 Antibody (C-term) - Additional Information**Gene ID** 51566**Other Names**

Armadillo repeat-containing X-linked protein 3, ARM protein lost in epithelial cancers on chromosome X 3, Protein ALEX3, ARMCX3, ALEX3

Target/Specificity

This ARMCX3 antibody is generated from rabbits immunized with a KLH conjugated synthetic peptide between 299-325 amino acids from the C-terminal region of human ARMCX3.

Dilution

WB~~1:1000

E~~Use at an assay dependent concentration.

Format

Purified polyclonal antibody supplied in PBS with 0.09% (W/V) sodium azide. This antibody is purified through a protein A column, followed by peptide affinity purification.

Storage

Maintain refrigerated at 2-8°C for up to 2 weeks. For long term storage store at -20°C in small aliquots to prevent freeze-thaw cycles.

Precautions

ARMCX3 Antibody (C-term) is for research use only and not for use in diagnostic or therapeutic procedures.

ARMCX3 Antibody (C-term) - Protein Information**Name** ARMCX3

Synonyms ALEX3

Function Regulates mitochondrial aggregation and transport in axons in living neurons. May link mitochondria to the TRAK2-kinesin motor complex via its interaction with Miro and TRAK2. Mitochondrial distribution and dynamics is regulated through ARM CX3 protein degradation, which is promoted by PCK and negatively regulated by WNT1. Enhances the SOX10-mediated transactivation of the neuronal acetylcholine receptor subunit alpha-3 and beta-4 subunit gene promoters.

Cellular Location

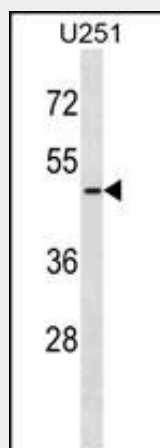
Mitochondrion outer membrane {ECO:0000250|UniProtKB:Q8BHS6}; Single-pass membrane protein. Cytoplasm {ECO:0000250|UniProtKB:Q8BHS6}. Nucleus {ECO:0000250|UniProtKB:Q8BHS6}

ARM CX3 Antibody (C-term) - Protocols

Provided below are standard protocols that you may find useful for product applications.

- [Western Blot](#)
- [Blocking Peptides](#)
- [Dot Blot](#)
- [Immunohistochemistry](#)
- [Immunofluorescence](#)
- [Immunoprecipitation](#)
- [Flow Cytometry](#)
- [Cell Culture](#)

ARM CX3 Antibody (C-term) - Images



ARM CX3 Antibody (C-term) (Cat. #AP18534b) western blot analysis in U251 cell line lysates (35ug/lane). This demonstrates the ARM CX3 antibody detected the ARM CX3 protein (arrow).

ARM CX3 Antibody (C-term) - Background

This gene encodes a member of the ALEX family of proteins which may play a role in tumor suppression. The encoded protein contains a potential N-terminal transmembrane domain and a single Armadillo (arm) repeat. Other proteins containing the arm repeat are involved in development, maintenance of tissue integrity, and tumorigenesis. This gene is closely localized with other family

members on the X chromosome. Three transcript variants encoding the same protein have been identified for this gene. [provided by RefSeq].

ARMCX3 Antibody (C-term) - References

Mou, Z., et al. J. Biol. Chem. 284(20):13629-13640(2009)
Olsen, J.V., et al. Cell 127(3):635-648(2006)
Olsen, J.V., et al. Cell 127(3):635-648(2006)
Ross, M.T., et al. Nature 434(7031):325-337(2005)
Clark, H.F., et al. Genome Res. 13(10):2265-2270(2003)