

**GG2L4 Antibody (Center)**  
**Affinity Purified Rabbit Polyclonal Antibody (Pab)**  
**Catalog # AP18551c****Specification**

---

**GG2L4 Antibody (Center) - Product Information**

Application	WB,E
Primary Accession	<a href="#">Q8N8X6</a>
Reactivity	Human
Host	Rabbit
Clonality	Polyclonal
Isotype	Rabbit IgG
Antigen Region	45-72

**GG2L4 Antibody (Center) - Additional Information****Other Names**

Golgin subfamily A member 2-like protein 4;

**Target/Specificity**

This GG2L4 antibody is generated from rabbits immunized with a KLH conjugated synthetic peptide between 45-72 amino acids from the Central region of human GG2L4.

**Dilution**

WB~~1:1000

**Format**

Purified polyclonal antibody supplied in PBS with 0.09% (W/V) sodium azide. This antibody is purified through a protein A column, followed by peptide affinity purification.

**Storage**

Maintain refrigerated at 2-8°C for up to 2 weeks. For long term storage store at -20°C in small aliquots to prevent freeze-thaw cycles.

**Precautions**

GG2L4 Antibody (Center) is for research use only and not for use in diagnostic or therapeutic procedures.

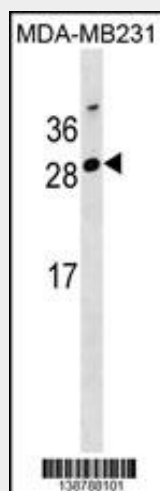
**GG2L4 Antibody (Center) - Protein Information****GG2L4 Antibody (Center) - Protocols**

Provided below are standard protocols that you may find useful for product applications.

- [Western Blot](#)
- [Blocking Peptides](#)

- [Dot Blot](#)
- [Immunohistochemistry](#)
- [Immunofluorescence](#)
- [Immunoprecipitation](#)
- [Flow Cytometry](#)
- [Cell Culture](#)

#### **GG2L4 Antibody (Center) - Images**



GG2L4 Antibody (Center) (Cat. #AP18551c) western blot analysis in MDA-MB231 cell line lysates (35ug/lane). This demonstrates the GG2L4 antibody detected the GG2L4 protein (arrow).

#### **GG2L4 Antibody (Center) - Background**

The function of this protein remains unknown.