

**TEX12 Antibody (Center)**  
**Affinity Purified Rabbit Polyclonal Antibody (Pab)**  
**Catalog # AP18566c**

**Specification**

---

**TEX12 Antibody (Center) - Product Information**

Application	WB,E
Primary Accession	<a href="#">O9BXU0</a>
Other Accession	<a href="#">NP_112565.1</a>
Reactivity	Human, Mouse
Host	Rabbit
Clonality	Polyclonal
Isotype	Rabbit IgG
Calculated MW	14107
Antigen Region	34-63

**TEX12 Antibody (Center) - Additional Information**

**Gene ID** 56158

**Other Names**

Testis-expressed sequence 12 protein, TEX12

**Target/Specificity**

This TEX12 antibody is generated from rabbits immunized with a KLH conjugated synthetic peptide between 34-63 amino acids from the Central region of human TEX12.

**Dilution**

WB~~1:1000

E~~Use at an assay dependent concentration.

**Format**

Purified polyclonal antibody supplied in PBS with 0.09% (W/V) sodium azide. This antibody is purified through a protein A column, followed by peptide affinity purification.

**Storage**

Maintain refrigerated at 2-8°C for up to 2 weeks. For long term storage store at -20°C in small aliquots to prevent freeze-thaw cycles.

**Precautions**

TEX12 Antibody (Center) is for research use only and not for use in diagnostic or therapeutic procedures.

**TEX12 Antibody (Center) - Protein Information**

**Name** TEX12

**Function** Component of the transverse central element of synaptonemal complexes (SCS),

formed between homologous chromosomes during meiotic prophase (By similarity). Requires SYCP1 in order to be incorporated into the central element (By similarity).

#### Cellular Location

Chromosome {ECO:0000250|UniProtKB:Q9CR81}. Note=In prophase I stage of meiosis, localizes in the transverse central elements of the central region between lateral elements of the synaptonemal complexes. Found only where the chromosome cores are synapsed. {ECO:0000250|UniProtKB:Q9CR81}

#### Tissue Location

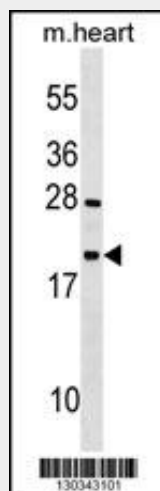
Testis specific.

### TEX12 Antibody (Center) - Protocols

Provided below are standard protocols that you may find useful for product applications.

- [Western Blot](#)
- [Blocking Peptides](#)
- [Dot Blot](#)
- [Immunohistochemistry](#)
- [Immunofluorescence](#)
- [Immunoprecipitation](#)
- [Flow Cytometry](#)
- [Cell Culture](#)

### TEX12 Antibody (Center) - Images



TEX12 Antibody (Center) (Cat. #AP18566c) western blot analysis in mouse heart tissue lysates (35ug/lane). This demonstrates the TEX12 antibody detected the TEX12 protein (arrow).

### TEX12 Antibody (Center) - Background

This gene is similar to a mouse gene that is expressed in the testis.

### TEX12 Antibody (Center) - References

Hosgood, H.D. III, et al. Occup Environ Med 66(12):848-853(2009)  
Lamesch, P., et al. Genomics 89(3):307-315(2007)

Wang, P.J., et al. Nat. Genet. 27(4):422-426(2001)