

PLK1S1 Antibody (N-term)
Affinity Purified Rabbit Polyclonal Antibody (Pab)
Catalog # AP18569a

Specification

PLK1S1 Antibody (N-term) - Product Information

Application	WB,E
Primary Accession	Q2M2Z5
Other Accession	NP_001156494.1
Reactivity	Human
Host	Rabbit
Clonality	Polyclonal
Isotype	Rabbit IgG
Calculated MW	75111
Antigen Region	57-86

PLK1S1 Antibody (N-term) - Additional Information

Gene ID 55857

Other Names

Centrosomal protein kizuna, Polo-like kinase 1 substrate 1, KIZ, C20orf19, NCRNA00153, PLK1S1

Target/Specificity

This PLK1S1 antibody is generated from rabbits immunized with a KLH conjugated synthetic peptide between 57-86 amino acids from the N-terminal region of human PLK1S1.

Dilution

WB~~1:1000

E~~Use at an assay dependent concentration.

Format

Purified polyclonal antibody supplied in PBS with 0.09% (W/V) sodium azide. This antibody is purified through a protein A column, followed by peptide affinity purification.

Storage

Maintain refrigerated at 2-8°C for up to 2 weeks. For long term storage store at -20°C in small aliquots to prevent freeze-thaw cycles.

Precautions

PLK1S1 Antibody (N-term) is for research use only and not for use in diagnostic or therapeutic procedures.

PLK1S1 Antibody (N-term) - Protein Information

Name KIZ

Synonyms C20orf19, NCRNA00153, PLK1S1

Function Centrosomal protein required for establishing a robust mitotic centrosome architecture that can endure the forces that converge on the centrosomes during spindle formation. Required for stabilizing the expanded pericentriolar material around the centriole.

Cellular Location

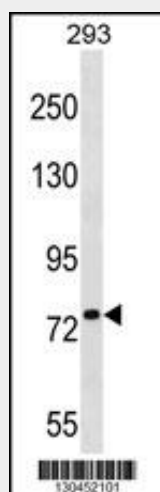
Cytoplasm, cytoskeleton, microtubule organizing center, centrosome. Cytoplasm, cytoskeleton, cilium basal body Note=Localizes to centrosomes throughout the cell cycle. After centrosome duplication, it usually remains associated only with the mother centrosome, containing the older mature centriole and particles surrounding it. During prophase, additional particles accumulate around both separating centrosomes. Does not accumulate at the microtubule minus ends, but instead localizes to the centrosomes and centrosome- surrounding area in a microtubule-independent and dependent manner, respectively.

PLK1S1 Antibody (N-term) - Protocols

Provided below are standard protocols that you may find useful for product applications.

- [Western Blot](#)
- [Blocking Peptides](#)
- [Dot Blot](#)
- [Immunohistochemistry](#)
- [Immunofluorescence](#)
- [Immunoprecipitation](#)
- [Flow Cytometry](#)
- [Cell Culture](#)

PLK1S1 Antibody (N-term) - Images



PLK1S1 Antibody (N-term) (Cat. #AP18569a) western blot analysis in 293 cell line lysates (35ug/lane). This demonstrates the PLK1S1 antibody detected the PLK1S1 protein (arrow).

PLK1S1 Antibody (N-term) - Background

Centrosomal protein required for establishing a robust mitotic centrosome architecture that can endure the forces that converge on the centrosomes during spindle formation. Required for stabilizing the expanded pericentriolar material around the centriole.

PLK1S1 Antibody (N-term) - References

Oshimori, N., et al. EMBO J. 28(14):2066-2076(2009)
Oshimori, N., et al. Nat. Cell Biol. 8(10):1095-1101(2006)