

HHCM Antibody (C-term)
Affinity Purified Rabbit Polyclonal Antibody (Pab)
Catalog # AP18571b

Specification

HHCM Antibody (C-term) - Product Information

Application	WB,E
Primary Accession	Q05877
Reactivity	Human
Host	Rabbit
Clonality	Polyclonal
Isotype	Rabbit IgG
Antigen Region	341-368

HHCM Antibody (C-term) - Additional Information

Other Names

Hepatocellular carcinoma protein HHCM

Target/Specificity

This HHCM antibody is generated from rabbits immunized with a KLH conjugated synthetic peptide between 341-368 amino acids from the C-terminal region of human HHCM.

Dilution

WB~~1:1000

E~~Use at an assay dependent concentration.

Format

Purified polyclonal antibody supplied in PBS with 0.09% (W/V) sodium azide. This antibody is purified through a protein A column, followed by peptide affinity purification.

Storage

Maintain refrigerated at 2-8°C for up to 2 weeks. For long term storage store at -20°C in small aliquots to prevent freeze-thaw cycles.

Precautions

HHCM Antibody (C-term) is for research use only and not for use in diagnostic or therapeutic procedures.

HHCM Antibody (C-term) - Protein Information

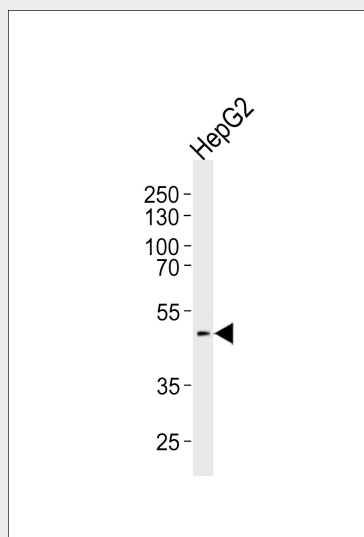
HHCM Antibody (C-term) - Protocols

Provided below are standard protocols that you may find useful for product applications.

- [Western Blot](#)

- [Blocking Peptides](#)
- [Dot Blot](#)
- [Immunohistochemistry](#)
- [Immunofluorescence](#)
- [Immunoprecipitation](#)
- [Flow Cytometry](#)
- [Cell Culture](#)

HHCM Antibody (C-term) - Images



Western blot analysis of lysate from HepG2 cell line, using HHCM Antibody (C-term)(Cat. #AP18571b). AP18571b was diluted at 1:1000 at each lane. A goat anti-rabbit IgG H&L(HRP) at 1:5000 dilution was used as the secondary antibody. Lysate at 35ug per lane.

HHCM Antibody (C-term) - Background

The function of this protein remains unknown.