

**ECH1 Antibody (C-term)**  
**Affinity Purified Rabbit Polyclonal Antibody (Pab)**  
**Catalog # AP18579b****Specification**

---

**ECH1 Antibody (C-term) - Product Information**

Application	WB,E
Primary Accession	<a href="#">O13011</a>
Other Accession	<a href="#">NP_001389.2</a>
Reactivity	Human
Host	Rabbit
Clonality	Polyclonal
Isotype	Rabbit IgG
Calculated MW	35816
Antigen Region	223-250

**ECH1 Antibody (C-term) - Additional Information****Gene ID** 1891**Other Names**

Delta(3, 5)-Delta(2, 4)-dienoyl-CoA isomerase, mitochondrial, 533-, ECH1

**Target/Specificity**

This ECH1 antibody is generated from rabbits immunized with a KLH conjugated synthetic peptide between 223-250 amino acids from the C-terminal region of human ECH1.

**Dilution**

WB~~1:1000

E~~Use at an assay dependent concentration.

**Format**

Purified polyclonal antibody supplied in PBS with 0.09% (W/V) sodium azide. This antibody is purified through a protein A column, followed by peptide affinity purification.

**Storage**

Maintain refrigerated at 2-8°C for up to 2 weeks. For long term storage store at -20°C in small aliquots to prevent freeze-thaw cycles.

**Precautions**

ECH1 Antibody (C-term) is for research use only and not for use in diagnostic or therapeutic procedures.

**ECH1 Antibody (C-term) - Protein Information****Name** ECH1 ([HGNC:3149](#))**Function** Isomerization of 3-trans,5-cis-dienoyl-CoA to 2-trans,4- trans-dienoyl-CoA.

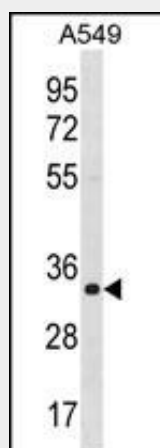
**Cellular Location**

Mitochondrion {ECO:0000250|UniProtKB:Q62651}. Peroxisome {ECO:0000250|UniProtKB:Q62651}

**ECH1 Antibody (C-term) - Protocols**

Provided below are standard protocols that you may find useful for product applications.

- [Western Blot](#)
- [Blocking Peptides](#)
- [Dot Blot](#)
- [Immunohistochemistry](#)
- [Immunofluorescence](#)
- [Immunoprecipitation](#)
- [Flow Cytometry](#)
- [Cell Culture](#)

**ECH1 Antibody (C-term) - Images**

ECH1 Antibody (C-term) (Cat. #AP18579b) western blot analysis in A549 cell line lysates (35ug/lane). This demonstrates the ECH1 antibody detected the ECH1 protein (arrow).

**ECH1 Antibody (C-term) - Background**

This gene encodes a member of the hydratase/isomerase superfamily. The gene product shows high sequence similarity to enoyl-coenzyme A (CoA) hydratases of several species, particularly within a conserved domain characteristic of these proteins. The encoded protein, which contains a C-terminal peroxisomal targeting sequence, localizes to the peroxisome. The rat ortholog, which localizes to the matrix of both the peroxisome and mitochondria, can isomerize 3-trans,5-cis-dienoyl-CoA to 2-trans,4-trans-dienoyl-CoA, indicating that it is a delta3,5-delta2,4-dienoyl-CoA isomerase. This enzyme functions in the auxiliary step of the fatty acid beta-oxidation pathway. Expression of the rat gene is induced by peroxisome proliferators.

**ECH1 Antibody (C-term) - References**

Olsen, J.V., et al. Cell 127(3):635-648(2006)

Olsen, J.V., et al. Cell 127(3):635-648(2006)  
Kovalyov, L.I., et al. Biochemistry Mosc. 71(4):448-453(2006)  
Goehler, H., et al. Mol. Cell 15(6):853-865(2004)  
Jia, Y., et al. J. Biol. Chem. 278(47):47232-47239(2003)