

HIRIP3 Antibody (Center)
Affinity Purified Rabbit Polyclonal Antibody (Pab)
Catalog # AP18580c**Specification**

HIRIP3 Antibody (Center) - Product Information

| | |
|-------------------|-----------------------------|
| Application | WB,E |
| Primary Accession | O9BW71 |
| Other Accession | NP_003600.2 |
| Reactivity | Human |
| Host | Rabbit |
| Clonality | Polyclonal |
| Isotype | Rabbit IgG |
| Calculated MW | 61957 |
| Antigen Region | 287-316 |

HIRIP3 Antibody (Center) - Additional Information**Gene ID** 8479**Other Names**

HIRA-interacting protein 3, HIRIP3

Target/Specificity

This HIRIP3 antibody is generated from rabbits immunized with a KLH conjugated synthetic peptide between 287-316 amino acids from the Central region of human HIRIP3.

Dilution

WB~~1:1000

Format

Purified polyclonal antibody supplied in PBS with 0.09% (W/V) sodium azide. This antibody is purified through a protein A column, followed by peptide affinity purification.

Storage

Maintain refrigerated at 2-8°C for up to 2 weeks. For long term storage store at -20°C in small aliquots to prevent freeze-thaw cycles.

Precautions

HIRIP3 Antibody (Center) is for research use only and not for use in diagnostic or therapeutic procedures.

HIRIP3 Antibody (Center) - Protein Information**Name** HIRIP3

Function May play a role in chromatin function and histone metabolism via its interaction with HIRA and histones.

Cellular Location

Nucleus. Note=Nuclear throughout the cell cycle and is excluded from condensed chromatin during mitosis

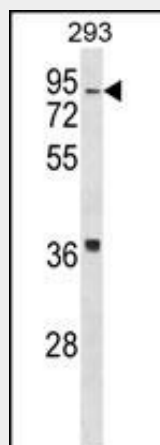
Tissue Location

Widely expressed. Isoform 1 is predominant in skeletal muscle. Isoform 2 is predominant in liver and heart

HIRIP3 Antibody (Center) - Protocols

Provided below are standard protocols that you may find useful for product applications.

- [Western Blot](#)
- [Blocking Peptides](#)
- [Dot Blot](#)
- [Immunohistochemistry](#)
- [Immunofluorescence](#)
- [Immunoprecipitation](#)
- [Flow Cytometry](#)
- [Cell Culture](#)

HIRIP3 Antibody (Center) - Images

HIRIP3 Antibody (Center) (Cat. #AP18580c) western blot analysis in 293 cell line lysates (35ug/lane). This demonstrates the HIRIP3 antibody detected the HIRIP3 protein (arrow).

HIRIP3 Antibody (Center) - Background

The HIRA protein shares sequence similarity with Hir1p and Hir2p, the two corepressors of histone gene transcription characterized in the yeast, *Saccharomyces cerevisiae*. The structural features of the HIRA protein suggest that it may function as part of a multiprotein complex. Recently, several cDNAs encoding HIRA-interacting proteins, or HIRIPs, have been identified. In vitro, the HIRIP3 gene product binds HIRA, as well as H2B and H3 core histones, indicating that a complex containing HIRA-HIRIP3 could function in some aspects of chromatin and histone metabolism.

HIRIP3 Antibody (Center) - References

Kumar, R.A., et al. PLoS ONE 4 (2), E4582 (2009) :
Sugiyama, N., et al. Mol. Cell Proteomics 6(6):1103-1109(2007)
Assrir, N., et al. Biol. Chem. 388(4):391-398(2007)
Olsen, J.V., et al. Cell 127(3):635-648(2006)
Olsen, J.V., et al. Cell 127(3):635-648(2006)