

**LDOC1L Antibody (C-term)**  
**Affinity Purified Rabbit Polyclonal Antibody (Pab)**  
**Catalog # AP18583b****Specification**

---

**LDOC1L Antibody (C-term) - Product Information**

Application	WB,E
Primary Accession	<a href="#">Q6ICC9</a>
Other Accession	<a href="#">NP_115663.2</a>
Reactivity	Human, Mouse
Host	Rabbit
Clonality	Polyclonal
Isotype	Rabbit IgG
Calculated MW	26154
Antigen Region	160-186

**LDOC1L Antibody (C-term) - Additional Information****Gene ID** 84247**Other Names**

Protein LDOC1L, Leucine zipper protein down-regulated in cancer cells-like, Mammalian retrotransposon-derived protein 6, LDOC1L, MAR6, MART6

**Target/Specificity**

This LDOC1L antibody is generated from rabbits immunized with a KLH conjugated synthetic peptide between 160-186 amino acids from the C-terminal region of human LDOC1L.

**Dilution**

WB~~1:1000

E~~Use at an assay dependent concentration.

**Format**

Purified polyclonal antibody supplied in PBS with 0.09% (W/V) sodium azide. This antibody is purified through a protein A column, followed by peptide affinity purification.

**Storage**

Maintain refrigerated at 2-8°C for up to 2 weeks. For long term storage store at -20°C in small aliquots to prevent freeze-thaw cycles.

**Precautions**

LDOC1L Antibody (C-term) is for research use only and not for use in diagnostic or therapeutic procedures.

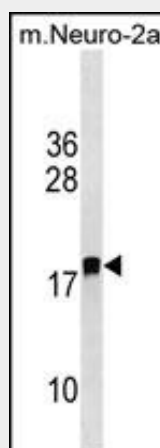
**LDOC1L Antibody (C-term) - Protein Information****Name** RTL6 ([HGNC:13343](#))

### **LDOC1L Antibody (C-term) - Protocols**

Provided below are standard protocols that you may find useful for product applications.

- [Western Blot](#)
- [Blocking Peptides](#)
- [Dot Blot](#)
- [Immunohistochemistry](#)
- [Immunofluorescence](#)
- [Immunoprecipitation](#)
- [Flow Cytometry](#)
- [Cell Culture](#)

### **LDOC1L Antibody (C-term) - Images**



LDOC1L Antibody (C-term) (Cat. #AP18583b) western blot analysis in mouse Neuro-2a cell line lysates (35ug/lane). This demonstrates the LDOC1L antibody detected the LDOC1L protein (arrow).

### **LDOC1L Antibody (C-term) - Background**

LDOC1 (Leucine zipper protein downregulated in cancer cells) is a 146 amino acid nuclear protein that contains a leucine zipper-like motif and a proline-rich region that shares marked similarity with an SH3-binding domain. The protein localizes to the nucleus and is downregulated in some cancer cell lines. It is thought to regulate the transcriptional response mediated by the nuclear factor  $\kappa$ B (NF- $\kappa$ B). The gene has been proposed as a tumor suppressor gene whose protein product may have an important role in the development and/or progression of some cancers. LDOC1L (Leucine zipper protein down-regulated in cancer cells-like), also known as MART6 (Mammalian retrotransposon-derived protein 6), is a 239 amino acid protein that belongs to the LDOC1 family.

### **LDOC1L Antibody (C-term) - References**

Brandt, J., et al. Gene 345(1):101-111(2005)  
Brandt, J., et al. Cytogenet. Genome Res. 110 (1-4), 307-317 (2005) :  
Collins, J.E., et al. Genome Biol. 5 (10), R84 (2004) :