

TBC1D2 Antibody (Center)
Affinity Purified Rabbit Polyclonal Antibody (Pab)
Catalog # AP18590C**Specification**

TBC1D2 Antibody (Center) - Product Information

Application	WB,E
Primary Accession	Q9BYX2
Other Accession	NP_060891.3
Reactivity	Human, Mouse
Host	Rabbit
Clonality	Polyclonal
Isotype	Rabbit IgG
Calculated MW	105414
Antigen Region	438-465

TBC1D2 Antibody (Center) - Additional Information**Gene ID** 55357**Other Names**

TBC1 domain family member 2A, Armus, Prostate antigen recognized and identified by SEREX 1, PARIS-1, TBC1D2, PARIS1, PP8997, TBC1D2A

Target/Specificity

This TBC1D2 antibody is generated from rabbits immunized with a KLH conjugated synthetic peptide between 438-465 amino acids from the Central region of human TBC1D2.

Dilution

WB~~1:1000

E~~Use at an assay dependent concentration.

Format

Purified polyclonal antibody supplied in PBS with 0.09% (W/V) sodium azide. This antibody is purified through a protein A column, followed by peptide affinity purification.

Storage

Maintain refrigerated at 2-8°C for up to 2 weeks. For long term storage store at -20°C in small aliquots to prevent freeze-thaw cycles.

Precautions

TBC1D2 Antibody (Center) is for research use only and not for use in diagnostic or therapeutic procedures.

TBC1D2 Antibody (Center) - Protein Information**Name** TBC1D2

Synonyms PARIS1, PP8997, TBC1D2A

Function Acts as a GTPase-activating protein for RAB7A. Signal effector acting as a linker between RAC1 and RAB7A, leading to RAB7A inactivation and subsequent inhibition of cadherin degradation and reduced cell-cell adhesion.

Cellular Location

Cytoplasm. Cytoplasmic vesicle. Cell junction

Tissue Location

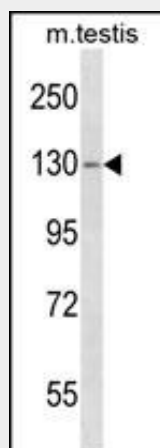
Expressed in a broad range of tissues, especially in kidney, liver, lung and placenta. Also expressed in keratinocytes and epithelia-containing organs. Isoform 2 is differentially expressed in prostate normal and cancer cells (at protein level)

TBC1D2 Antibody (Center) - Protocols

Provided below are standard protocols that you may find useful for product applications.

- [Western Blot](#)
- [Blocking Peptides](#)
- [Dot Blot](#)
- [Immunohistochemistry](#)
- [Immunofluorescence](#)
- [Immunoprecipitation](#)
- [Flow Cytometry](#)
- [Cell Culture](#)

TBC1D2 Antibody (Center) - Images



TBC1D2 Antibody (Center) (Cat. #AP18590c) western blot analysis in mouse testis tissue lysates (35ug/lane). This demonstrates the TBC1D2 antibody detected the TBC1D2 protein (arrow).

TBC1D2 Antibody (Center) - Background

TBC1D2 acts as GTPase-activating protein for RAB7A. Signal effector acting as a linker between RAC1 and RAB7A, leading to RAB7A inactivation and subsequent inhibition of cadherin degradation and reduced cell-cell adhesion.

TBC1D2 Antibody (Center) - References

Letra, A., et al. Am. J. Med. Genet. A 152A (7), 1701-1710 (2010) :
Ishibashi, K., et al. Genes Cells 14(1):41-52(2009)
Olsen, J.V., et al. Cell 127(3):635-648(2006)
Beausoleil, S.A., et al. Proc. Natl. Acad. Sci. U.S.A. 101(33):12130-12135(2004)
Zhou, Y., et al. Biochem. Biophys. Res. Commun. 290(2):830-838(2002)