

**MTHFS Antibody (C-term)**  
**Affinity Purified Rabbit Polyclonal Antibody (Pab)**  
**Catalog # AP18596B****Specification**

---

**MTHFS Antibody (C-term) - Product Information**

Application	WB,E
Primary Accession	<a href="#">P49914</a>
Other Accession	<a href="#">NP_006432.1</a>
Reactivity	Human, Mouse
Host	Rabbit
Clonality	Polyclonal
Isotype	Rabbit IgG
Calculated MW	23256
Antigen Region	133-159

**MTHFS Antibody (C-term) - Additional Information****Gene ID** 10588**Other Names**

5-formyltetrahydrofolate cyclo-ligase, 10-methenyl-tetrahydrofolate synthetase, MTHFS, Methenyl-THF synthetase, MTHFS

**Target/Specificity**

This MTHFS antibody is generated from rabbits immunized with a KLH conjugated synthetic peptide between 133-159 amino acids from the C-terminal region of human MTHFS.

**Dilution**

WB~~1:1000

**Format**

Purified polyclonal antibody supplied in PBS with 0.09% (W/V) sodium azide. This antibody is purified through a protein A column, followed by peptide affinity purification.

**Storage**

Maintain refrigerated at 2-8°C for up to 2 weeks. For long term storage store at -20°C in small aliquots to prevent freeze-thaw cycles.

**Precautions**

MTHFS Antibody (C-term) is for research use only and not for use in diagnostic or therapeutic procedures.

**MTHFS Antibody (C-term) - Protein Information****Name** MTHFS**Function** Contributes to tetrahydrofolate metabolism. Helps regulate carbon flow through the

folate-dependent one-carbon metabolic network that supplies carbon for the biosynthesis of purines, thymidine and amino acids. Catalyzes the irreversible conversion of 5-formyltetrahydrofolate (5-FTHF) to yield 5,10-methenyltetrahydrofolate.

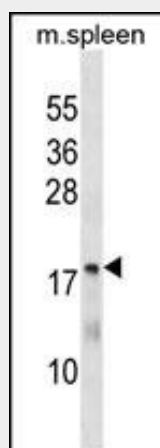
**Cellular Location**

Cytoplasm.

**MTHFS Antibody (C-term) - Protocols**

Provided below are standard protocols that you may find useful for product applications.

- [Western Blot](#)
- [Blocking Peptides](#)
- [Dot Blot](#)
- [Immunohistochemistry](#)
- [Immunofluorescence](#)
- [Immunoprecipitation](#)
- [Flow Cytometry](#)
- [Cell Culture](#)

**MTHFS Antibody (C-term) - Images**

MTHFS Antibody (C-term) (Cat. #AP18596b) western blot analysis in mouse spleen tissue lysates (35ug/lane). This demonstrates the MTHFS antibody detected the MTHFS protein (arrow).

**MTHFS Antibody (C-term) - Background**

MTHFS contributes to tetrahydrofolate metabolism. Helps regulate carbon flow through the folate-dependent one-carbon metabolic network that supplies carbon for the biosynthesis of purines, thymidine and amino acids.

**MTHFS Antibody (C-term) - References**

Kelemen, L.E., et al. Cancer Epidemiol. Biomarkers Prev. 19(7):1822-1830(2010)  
Hazra, A., et al. Cancer Causes Control 21(3):331-345(2010)  
Jugessur, A., et al. PLoS ONE 5 (7), E11493 (2010) :  
Wu, D., et al. Cancer Res. 69(18):7294-7301(2009)  
Franke, B., et al. Birth Defects Res. Part A Clin. Mol. Teratol. 85(3):216-226(2009)