

**ACBD6 Antibody (N-term)**  
**Affinity Purified Rabbit Polyclonal Antibody (Pab)**  
**Catalog # AP18623a****Specification**

---

**ACBD6 Antibody (N-term) - Product Information**

Application	WB,E
Primary Accession	<a href="#">Q9BR61</a>
Other Accession	<a href="#">Q4V869</a> , <a href="#">Q5RJK8</a> , <a href="#">A2VDR2</a> , <a href="#">NP_115736.1</a>
Reactivity	Human
Predicted	Bovine, Rat, Xenopus
Host	Rabbit
Clonality	Polyclonal
Isotype	Rabbit IgG
Calculated MW	31151
Antigen Region	52-78

**ACBD6 Antibody (N-term) - Additional Information****Gene ID** 84320**Other Names**

Acyl-CoA-binding domain-containing protein 6, ACBD6

**Target/Specificity**

This ACBD6 antibody is generated from rabbits immunized with a KLH conjugated synthetic peptide between 52-78 amino acids from the N-terminal region of human ACBD6.

**Dilution**

WB~~1:1000

E~~Use at an assay dependent concentration.

**Format**

Purified polyclonal antibody supplied in PBS with 0.09% (W/V) sodium azide. This antibody is purified through a protein A column, followed by peptide affinity purification.

**Storage**

Maintain refrigerated at 2-8°C for up to 2 weeks. For long term storage store at -20°C in small aliquots to prevent freeze-thaw cycles.

**Precautions**

ACBD6 Antibody (N-term) is for research use only and not for use in diagnostic or therapeutic procedures.

**ACBD6 Antibody (N-term) - Protein Information****Name** ACBD6

**Function** Binds long-chain acyl-coenzyme A molecules with a strong preference for unsaturated C18:1-CoA, lower affinity for unsaturated C20:4-CoA, and very weak affinity for saturated C16:0-CoA. Does not bind fatty acids. Plays a role in protein N-myristoylation (PubMed:[37951597](#)).

**Cellular Location**

Cytoplasm. Nucleus

**Tissue Location**

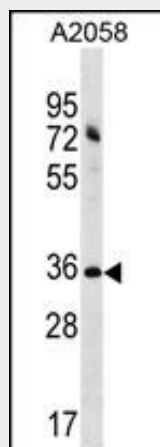
Detected in placenta and spleen (at protein level). Detected in placenta, umbilical cord blood, CD34-positive hematopoietic progenitor cells and bone marrow.

**ACBD6 Antibody (N-term) - Protocols**

Provided below are standard protocols that you may find useful for product applications.

- [Western Blot](#)
- [Blocking Peptides](#)
- [Dot Blot](#)
- [Immunohistochemistry](#)
- [Immunofluorescence](#)
- [Immunoprecipitation](#)
- [Flow Cytometry](#)
- [Cell Culture](#)

**ACBD6 Antibody (N-term) - Images**



ACBD6 Antibody (N-term) (Cat. #AP18623a) western blot analysis in A2058 cell line lysates (35ug/lane). This demonstrates the ACBD6 antibody detected the ACBD6 protein (arrow).

**ACBD6 Antibody (N-term) - Background**

ACBD6 binds long-chain acyl-coenzyme A molecules with a strong preference for unsaturated C18:1-CoA, lower affinity for unsaturated C20:4-CoA, and very weak affinity for saturated C16:0-CoA. Does not bind fatty acids.

**ACBD6 Antibody (N-term) - References**

Rose, J.E., et al. Mol. Med. 16 (7-8), 247-253 (2010) :  
Soupene, E., et al. J. Lipid Res. 49(5):1103-1112(2008)