

AMOT Antibody (N-term)
Affinity Purified Rabbit Polyclonal Antibody (Pab)
Catalog # AP18634a**Specification**

AMOT Antibody (N-term) - Product Information

Application	WB,E
Primary Accession	Q4VCS5
Other Accession	NP_001106962.1
Reactivity	Human
Host	Rabbit
Clonality	Polyclonal
Isotype	Rabbit IgG
Calculated MW	118085
Antigen Region	240-267

AMOT Antibody (N-term) - Additional Information**Gene ID** 154796**Other Names**

Angiomotin, AMOT, KIAA1071

Target/Specificity

This AMOT antibody is generated from rabbits immunized with a KLH conjugated synthetic peptide between 240-267 amino acids from the N-terminal region of human AMOT.

Dilution

WB~~1:1000

E~~Use at an assay dependent concentration.

Format

Purified polyclonal antibody supplied in PBS with 0.09% (W/V) sodium azide. This antibody is purified through a protein A column, followed by peptide affinity purification.

Storage

Maintain refrigerated at 2-8°C for up to 2 weeks. For long term storage store at -20°C in small aliquots to prevent freeze-thaw cycles.

Precautions

AMOT Antibody (N-term) is for research use only and not for use in diagnostic or therapeutic procedures.

AMOT Antibody (N-term) - Protein Information**Name** AMOT**Synonyms** KIAA1071

Function Plays a central role in tight junction maintenance via the complex formed with ARHGAP17, which acts by regulating the uptake of polarity proteins at tight junctions. Appears to regulate endothelial cell migration and tube formation. May also play a role in the assembly of endothelial cell-cell junctions. Repressor of YAP1 and WWTR1/TAZ transcription of target genes, potentially via regulation of Hippo signaling-mediated phosphorylation of YAP1 which results in its recruitment to tight junctions (PubMed:[21205866](#)).

Cellular Location

Cell junction, tight junction. Note=Localized on the cell surface. May act as a transmembrane protein

Tissue Location

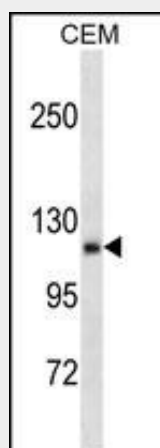
Expressed in placenta and skeletal muscle. Found in the endothelial cells of capillaries as well as larger vessels of the placenta.

AMOT Antibody (N-term) - Protocols

Provided below are standard protocols that you may find useful for product applications.

- [Western Blot](#)
- [Blocking Peptides](#)
- [Dot Blot](#)
- [Immunohistochemistry](#)
- [Immunofluorescence](#)
- [Immunoprecipitation](#)
- [Flow Cytometry](#)
- [Cell Culture](#)

AMOT Antibody (N-term) - Images



AMOT Antibody (N-term) (Cat. #AP18634a) western blot analysis in CEM cell line lysates (35ug/lane). This demonstrates the AMOT antibody detected the AMOT protein (arrow).

AMOT Antibody (N-term) - Background

This gene belongs to the motin family of angiostatin binding proteins characterized by conserved coiled-coil domains and C-terminal PDZ binding motifs. The encoded protein is expressed predominantly in endothelial cells of capillaries as well as larger vessels of the placenta where it may mediate the inhibitory effect

of angiostatin on tube formation and the migration of endothelial cells toward growth factors during the formation of new blood vessels. Alternative splicing results in multiple transcript variants encoding different isoforms.

AMOT Antibody (N-term) - References

Bailey, S.D., et al. Diabetes Care 33(10):2250-2253(2010)
Heller, B., et al. J. Biol. Chem. 285(16):12308-12320(2010)
Talmud, P.J., et al. Am. J. Hum. Genet. 85(5):628-642(2009)
Gagne, V., et al. Cell Motil. Cytoskeleton 66(9):754-768(2009)
Zheng, Y., et al. Circ. Res. 105(3):260-270(2009)