

**KBTBD7 Antibody (Center)**  
**Affinity Purified Rabbit Polyclonal Antibody (Pab)**  
**Catalog # AP18640c****Specification**

---

**KBTBD7 Antibody (Center) - Product Information**

Application	WB,E
Primary Accession	<a href="#">O8WVZ9</a>
Other Accession	<a href="#">O86V97</a> , <a href="#">NP_115514.2</a>
Reactivity	Human
Host	Rabbit
Clonality	Polyclonal
Isotype	Rabbit IgG
Calculated MW	77163
Antigen Region	428-455

**KBTBD7 Antibody (Center) - Additional Information****Gene ID** 84078**Other Names**

Kelch repeat and BTB domain-containing protein 7, KBTBD7

**Target/Specificity**

This KBTBD7 antibody is generated from rabbits immunized with a KLH conjugated synthetic peptide between 428-455 amino acids from the Central region of human KBTBD7.

**Dilution**

WB~~1:1000

**Format**

Purified polyclonal antibody supplied in PBS with 0.09% (W/V) sodium azide. This antibody is purified through a protein A column, followed by peptide affinity purification.

**Storage**

Maintain refrigerated at 2-8°C for up to 2 weeks. For long term storage store at -20°C in small aliquots to prevent freeze-thaw cycles.

**Precautions**

KBTBD7 Antibody (Center) is for research use only and not for use in diagnostic or therapeutic procedures.

**KBTBD7 Antibody (Center) - Protein Information****Name** KBTBD7 ([HGNC:25266](#))

**Function** As part of the CUL3(KBTBD6/7) E3 ubiquitin ligase complex functions as a substrate adapter for the RAC1 guanine exchange factor (GEF) TIAM1, mediating its 'Lys-48' ubiquitination

and proteasomal degradation (PubMed:[25684205](#)). By controlling this ubiquitination, regulates RAC1 signal transduction and downstream biological processes including the organization of the cytoskeleton, cell migration and cell proliferation (PubMed:[25684205](#)). Ubiquitination of TIAM1 requires the membrane-associated protein GABARAP which may restrict locally the activity of the complex (PubMed:[25684205](#)).

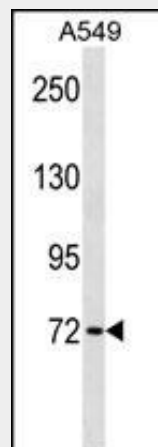
**Cellular Location**

Cytoplasm. Nucleus

**KBTBD7 Antibody (Center) - Protocols**

Provided below are standard protocols that you may find useful for product applications.

- [Western Blot](#)
- [Blocking Peptides](#)
- [Dot Blot](#)
- [Immunohistochemistry](#)
- [Immunofluorescence](#)
- [Immunoprecipitation](#)
- [Flow Cytometry](#)
- [Cell Culture](#)

**KBTBD7 Antibody (Center) - Images**

KBTBD7 Antibody (Center) (Cat. #AP18640c) western blot analysis in A549 cell line lysates (35ug/lane). This demonstrates the KBTBD7 antibody detected the KBTBD7 protein (arrow).

**KBTBD7 Antibody (Center) - Background**

The function of this protein is unknown.

**KBTBD7 Antibody (Center) - References**

Hu, J., et al. BMB Rep 43(1):17-22(2010)  
Stelzl, U., et al. Cell 122(6):957-968(2005)