

KRT33B Antibody (N-term)
Affinity Purified Rabbit Polyclonal Antibody (Pab)
Catalog # AP18642a**Specification**

KRT33B Antibody (N-term) - Product Information

Application	WB,E
Primary Accession	Q14525
Other Accession	O76009 , Q15323 , NP_002270.1
Reactivity	Human
Host	Rabbit
Clonality	Polyclonal
Isotype	Rabbit IgG
Calculated MW	46214
Antigen Region	64-91

KRT33B Antibody (N-term) - Additional Information**Gene ID** 3884**Other Names**

Keratin, type I cuticular Ha3-II, Hair keratin, type I Ha3-II, Keratin-33B, K33B, KRT33B, HHA3-II, HKA3B, KRTHA3B

Target/Specificity

This KRT33B antibody is generated from rabbits immunized with a KLH conjugated synthetic peptide between 64-91 amino acids from the N-terminal region of human KRT33B.

Dilution

WB~~1:1000

E~~Use at an assay dependent concentration.

Format

Purified polyclonal antibody supplied in PBS with 0.09% (W/V) sodium azide. This antibody is purified through a protein A column, followed by peptide affinity purification.

Storage

Maintain refrigerated at 2-8°C for up to 2 weeks. For long term storage store at -20°C in small aliquots to prevent freeze-thaw cycles.

Precautions

KRT33B Antibody (N-term) is for research use only and not for use in diagnostic or therapeutic procedures.

KRT33B Antibody (N-term) - Protein Information**Name** KRT33B

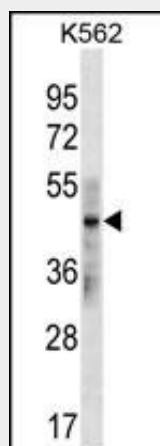
Synonyms HHA3-II, HKA3B, KRTHA3B

KRT33B Antibody (N-term) - Protocols

Provided below are standard protocols that you may find useful for product applications.

- [Western Blot](#)
- [Blocking Peptides](#)
- [Dot Blot](#)
- [Immunohistochemistry](#)
- [Immunofluorescence](#)
- [Immunoprecipitation](#)
- [Flow Cytometry](#)
- [Cell Culture](#)

KRT33B Antibody (N-term) - Images



KRT33B Antibody (N-term) (Cat. #AP18642a) western blot analysis in K562 cell line lysates (35ug/lane). This demonstrates the KRT33B antibody detected the KRT33B protein (arrow).

KRT33B Antibody (N-term) - Background

The protein encoded by this gene is a member of the keratin gene family. It is one of the type I hair keratin genes which are clustered in a region of chromosome 17q12-q21 and have the same direction of transcription. As a type I hair keratin, it is an acidic protein which heterodimerizes with type II keratins to form hair and nails. There are two isoforms of this protein, encoded by two separate genes, KRTHA3A and KRTHA3B. [provided by RefSeq].

KRT33B Antibody (N-term) - References

Ewing, R.M., et al. Mol. Syst. Biol. 3, 89 (2007) :
Schweizer, J., et al. J. Cell Biol. 174(2):169-174(2006)
Anderson, N.L., et al. Mol. Cell Proteomics 3(4):311-326(2004)
Langbein, L., et al. J. Biol. Chem. 274(28):19874-19884(1999)
Rogers, M.A., et al. J. Biol. Chem. 273(41):26683-26691(1998)