

STOML1 Antibody (N-term)
Affinity Purified Rabbit Polyclonal Antibody (Pab)
Catalog # AP18651a**Specification**

STOML1 Antibody (N-term) - Product Information

Application	WB,E
Primary Accession	Q9UBI4
Other Accession	Q8CI66 , NP_004800.2
Reactivity	Human
Predicted	Mouse
Host	Rabbit
Clonality	Polyclonal
Isotype	Rabbit IgG
Calculated MW	42968
Antigen Region	1-30

STOML1 Antibody (N-term) - Additional Information**Gene ID** 9399**Other Names**

Stomatin-like protein 1, SLP-1, EPB72-like protein 1, Protein unc-24 homolog, Stomatin-related protein, STORP, STOML1, SLP1, UNC24

Target/Specificity

This STOML1 antibody is generated from rabbits immunized with a KLH conjugated synthetic peptide between 1-30 amino acids from the N-terminal region of human STOML1.

Dilution

WB~~1:1000

E~~Use at an assay dependent concentration.

Format

Purified polyclonal antibody supplied in PBS with 0.09% (W/V) sodium azide. This antibody is purified through a protein A column, followed by peptide affinity purification.

Storage

Maintain refrigerated at 2-8°C for up to 2 weeks. For long term storage store at -20°C in small aliquots to prevent freeze-thaw cycles.

Precautions

STOML1 Antibody (N-term) is for research use only and not for use in diagnostic or therapeutic procedures.

STOML1 Antibody (N-term) - Protein Information**Name** STOML1

Synonyms SLP1, UNC24

Function May play a role in cholesterol transfer to late endosomes (PubMed:[19696025](#)). May play a role in modulating membrane acid-sensing ion channels. Can specifically inhibit proton-gated current of ASIC1 isoform 1. Can increase inactivation speed of ASIC3. May be involved in regulation of proton sensing in dorsal root ganglions (By similarity). May play a role in protecting FBXW7 isoform 3 from degradation (PubMed:[23082202](#)).

Cellular Location

Membrane; Single-pass type III membrane protein. Late endosome membrane. Membrane raft. Cell membrane {ECO:0000250|UniProtKB:Q8CI66}; Single-pass type III membrane protein Cytoplasmic vesicle {ECO:0000250|UniProtKB:Q8CI66}

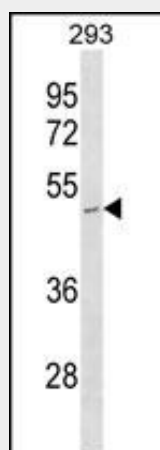
Tissue Location

Ubiquitously expressed at low levels. Expression is highest in brain.

STOML1 Antibody (N-term) - Protocols

Provided below are standard protocols that you may find useful for product applications.

- [Western Blot](#)
- [Blocking Peptides](#)
- [Dot Blot](#)
- [Immunohistochemistry](#)
- [Immunofluorescence](#)
- [Immunoprecipitation](#)
- [Flow Cytometry](#)
- [Cell Culture](#)

STOML1 Antibody (N-term) - Images

STOML1 Antibody (N-term) (Cat. #AP18651a) western blot analysis in 293 cell line lysates (35ug/lane). This demonstrates the STOML1 antibody detected the STOML1 protein (arrow).

STOML1 Antibody (N-term) - Background

STOML1 belongs to the band 7/mec-2 family and contains one SCP2 domain. It is ubiquitously expressed at low levels; expression is highest in brain. There are two named isoforms.

STOML1 Antibody (N-term) - References

Mairhofer, M., et al. J. Biol. Chem. 284(42):29218-29229(2009)
Gilles, F., et al. Eur. J. Haematol. 64(2):104-113(2000)
Seidel, G., et al. Gene 225 (1-2), 23-29 (1998) :