

APOB48R Antibody (Center)
Affinity Purified Rabbit Polyclonal Antibody (Pab)
Catalog # AP18657c**Specification**

APOB48R Antibody (Center) - Product Information

Application	WB,E
Primary Accession	Q0VD83
Other Accession	NP_061160.2
Reactivity	Human
Host	Rabbit
Clonality	Polyclonal
Isotype	Rabbit IgG
Calculated MW	115634
Antigen Region	596-622

APOB48R Antibody (Center) - Additional Information**Gene ID** 55911**Other Names**

Apolipoprotein B receptor, Apolipoprotein B-100 receptor, Apolipoprotein B-48 receptor, Apolipoprotein B48 receptor, apoB-48R, APOBR, APOB48R

Target/Specificity

This APOB48R antibody is generated from rabbits immunized with a KLH conjugated synthetic peptide between 596-622 amino acids from the Central region of human APOB48R.

Dilution

WB~~1:1000

E~~Use at an assay dependent concentration.

Format

Purified polyclonal antibody supplied in PBS with 0.09% (W/V) sodium azide. This antibody is purified through a protein A column, followed by peptide affinity purification.

Storage

Maintain refrigerated at 2-8°C for up to 2 weeks. For long term storage store at -20°C in small aliquots to prevent freeze-thaw cycles.

Precautions

APOB48R Antibody (Center) is for research use only and not for use in diagnostic or therapeutic procedures.

APOB48R Antibody (Center) - Protein Information**Name** APOBR ([HGNC:24087](#))

Synonyms APOB48R

Function Macrophage receptor that binds to the apolipoprotein B48 (APOB) of dietary triglyceride (TG)-rich lipoproteins (TRL) or to a like domain of APOB in hypertriglyceridemic very low density lipoprotein (HTG-VLDL). Binds and internalizes TRL when out of the context of the macrophage. May provide essential lipids to reticuloendothelial cells. Could also be involved in foam cell formation with elevated TRL and remnant lipoprotein (RLP). Mediates the rapid high-affinity uptake of chylomicrons (CM), HTG-VLDL, and trypsinized (tryp) VLDL devoid of APOE in vitro in macrophages.

Cellular Location

Cell membrane; Peripheral membrane protein. Note=Binds monocyte-macrophage membrane. Thought to be anchored in the membrane through an interaction with an integral membrane protein

Tissue Location

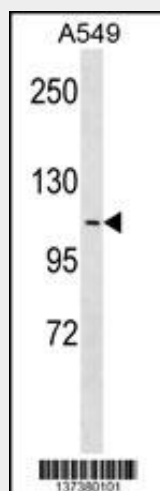
Expressed in peripheral blood leukocytes > bone marrow = spleen > lymph node, and only faintly visible in appendix and thymus. Expressed in the brain, heart, kidney, liver, lung, pancreas, and placenta. Expressed primarily by reticuloendothelial cells: monocytes, macrophages, and endothelial cells. Expressed in atherosclerotic lesion foam cells.

APOB48R Antibody (Center) - Protocols

Provided below are standard protocols that you may find useful for product applications.

- [Western Blot](#)
- [Blocking Peptides](#)
- [Dot Blot](#)
- [Immunohistochemistry](#)
- [Immunofluorescence](#)
- [Immunoprecipitation](#)
- [Flow Cytometry](#)
- [Cell Culture](#)

APOB48R Antibody (Center) - Images



APOB48R Antibody (Center) (Cat. #AP18657c) western blot analysis in A549 cell line lysates (35ug/lane). This demonstrates the APOB48R antibody detected the APOB48R protein (arrow).

APOB48R Antibody (Center) - Background

Apolipoprotein B48 receptor is a macrophage receptor that binds to the apolipoprotein B48 of dietary triglyceride (TG)-rich lipoproteins. This receptor may provide essential lipids, lipid-soluble vitamins and other nutrients to reticuloendothelial cells. If overwhelmed with elevated plasma triglyceride, the apolipoprotein B48 receptor may contribute to foam cell formation, endothelial dysfunction, and atherothrombogenesis. [provided by RefSeq].

APOB48R Antibody (Center) - References

Kawakami, A., et al. Arterioscler. Thromb. Vasc. Biol. 25(2):424-429(2005)
Fujita, Y., et al. J. Hum. Genet. 50(4):203-209(2005)
Brown, M.L., et al. Proc. Natl. Acad. Sci. U.S.A. 97(13):7488-7493(2000)