

**UTP11L Antibody (C-term)**  
**Affinity Purified Rabbit Polyclonal Antibody (Pab)**  
**Catalog # AP18665b****Specification**

---

**UTP11L Antibody (C-term) - Product Information**

Application	WB,E
Primary Accession	<a href="#">O9Y3A2</a>
Other Accession	<a href="#">O8R5K5</a> , <a href="#">NP_057121.2</a>
Reactivity	Human
Predicted	Rat
Host	Rabbit
Clonality	Polyclonal
Isotype	Rabbit IgG
Calculated MW	30447
Antigen Region	227-253

**UTP11L Antibody (C-term) - Additional Information****Gene ID** 51118**Other Names**

Probable U3 small nucleolar RNA-associated protein 11, U3 snoRNA-associated protein 11, UTP11-like protein, UTP11L

**Target/Specificity**

This UTP11L antibody is generated from rabbits immunized with a KLH conjugated synthetic peptide between 227-253 amino acids from the C-terminal region of human UTP11L.

**Dilution**

WB~~1:1000

E~~Use at an assay dependent concentration.

**Format**

Purified polyclonal antibody supplied in PBS with 0.09% (W/V) sodium azide. This antibody is purified through a protein A column, followed by peptide affinity purification.

**Storage**

Maintain refrigerated at 2-8°C for up to 2 weeks. For long term storage store at -20°C in small aliquots to prevent freeze-thaw cycles.

**Precautions**

UTP11L Antibody (C-term) is for research use only and not for use in diagnostic or therapeutic procedures.

**UTP11L Antibody (C-term) - Protein Information****Name** UTP11 ([HGNC:24329](#))

**Function** Part of the small subunit (SSU) processome, first precursor of the small eukaryotic ribosomal subunit. During the assembly of the SSU processome in the nucleolus, many ribosome biogenesis factors, an RNA chaperone and ribosomal proteins associate with the nascent pre- rRNA and work in concert to generate RNA folding, modifications, rearrangements and cleavage as well as targeted degradation of pre- ribosomal RNA by the RNA exosome. Involved in nucleolar processing of pre-18S ribosomal RNA.

**Cellular Location**

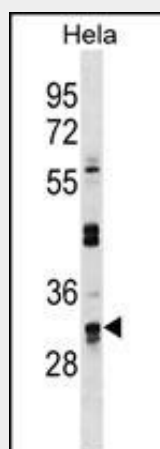
Nucleus, nucleolus.

**UTP11L Antibody (C-term) - Protocols**

Provided below are standard protocols that you may find useful for product applications.

- [Western Blot](#)
- [Blocking Peptides](#)
- [Dot Blot](#)
- [Immunohistochemistry](#)
- [Immunofluorescence](#)
- [Immunoprecipitation](#)
- [Flow Cytometry](#)
- [Cell Culture](#)

**UTP11L Antibody (C-term) - Images**



UTP11L Antibody (C-term) (Cat. #AP18665b) western blot analysis in HeLa cell line lysates (35ug/lane). This demonstrates the UTP11L antibody detected the UTP11L protein (arrow).

**UTP11L Antibody (C-term) - Background**

UTP11L is involved in nucleolar processing of pre-18S ribosomal RNA (By similarity).

**UTP11L Antibody (C-term) - References**

- Olsen, J.V., et al. Cell 127(3):635-648(2006)  
Andersen, J.S., et al. Nature 433(7021):77-83(2005)  
Heese, K., et al. Neuroscience 116(2):321-324(2003)  
Andersen, J.S., et al. Curr. Biol. 12(1):1-11(2002)  
Heese, K., et al. Eur. J. Neurosci. 15(1):79-86(2002)