

KIRREL2 Antibody (N-term)
Affinity Purified Rabbit Polyclonal Antibody (Pab)
Catalog # AP18668a**Specification**

KIRREL2 Antibody (N-term) - Product Information

Application	WB,E
Primary Accession	O6UWL6
Other Accession	O7TSU7 , NP_115499.4
Reactivity	Human
Predicted	Mouse
Host	Rabbit
Clonality	Polyclonal
Isotype	Rabbit IgG
Calculated MW	75093
Antigen Region	190-216

KIRREL2 Antibody (N-term) - Additional Information**Gene ID** 84063**Other Names**

Kin of IRRE-like protein 2, Kin of irregular chiasm-like protein 2, Nephrin-like protein 3, KIRREL2, NEPH3

Target/Specificity

This KIRREL2 antibody is generated from rabbits immunized with a KLH conjugated synthetic peptide between 190-216 amino acids from the N-terminal region of human KIRREL2.

Dilution

WB~~1:1000

Format

Purified polyclonal antibody supplied in PBS with 0.09% (W/V) sodium azide. This antibody is purified through a protein A column, followed by peptide affinity purification.

Storage

Maintain refrigerated at 2-8°C for up to 2 weeks. For long term storage store at -20°C in small aliquots to prevent freeze-thaw cycles.

Precautions

KIRREL2 Antibody (N-term) is for research use only and not for use in diagnostic or therapeutic procedures.

KIRREL2 Antibody (N-term) - Protein Information**Name** KIRREL2

Synonyms NEPH3

Function May regulate basal insulin secretion.

Cellular Location

Cell membrane {ECO:0000250|UniProtKB:Q7TSU7}; Single-pass type I membrane protein.

Note=Localized along the sites of the cell contacts. Colocalizes with E-Cadherin and beta- catenin. {ECO:0000250|UniProtKB:Q7TSU7}

Tissue Location

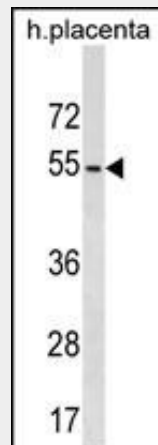
Highly expressed in beta-cells of the pancreatic islets.

KIRREL2 Antibody (N-term) - Protocols

Provided below are standard protocols that you may find useful for product applications.

- [Western Blot](#)
- [Blocking Peptides](#)
- [Dot Blot](#)
- [Immunohistochemistry](#)
- [Immunofluorescence](#)
- [Immunoprecipitation](#)
- [Flow Cytometry](#)
- [Cell Culture](#)

KIRREL2 Antibody (N-term) - Images



KIRREL2 Antibody (N-term) (Cat. #AP18668a) western blot analysis in human placenta tissue lysates (35ug/lane). This demonstrates the KIRREL2 antibody detected the KIRREL2 protein (arrow).

KIRREL2 Antibody (N-term) - Background

KIRREL2 is an immunoglobulin super family gene, it has been found to be expressed in beta cells of pancreatic islets.

KIRREL2 Antibody (N-term) - References

Bailey, S.D., et al. Diabetes Care 33(10):2250-2253(2010)
Davila, S., et al. Genes Immun. 11(3):232-238(2010)

Talmud, P.J., et al. Am. J. Hum. Genet. 85(5):628-642(2009)

Ristola, M., et al. BMC Mol. Biol. 10, 83 (2009) :

Rinta-Valkama, J., et al. Diabetes Metab. Res. Rev. 23(2):119-126(2007)