

GTF3A Antibody (C-term)
Affinity Purified Rabbit Polyclonal Antibody (Pab)
Catalog # AP18680b

Specification

GTF3A Antibody (C-term) - Product Information

Application	WB,E
Primary Accession	O92664
Other Accession	NP_002088.2
Reactivity	Human
Host	Rabbit
Clonality	Polyclonal
Isotype	Rabbit IgG
Calculated MW	41515
Antigen Region	308-334

GTF3A Antibody (C-term) - Additional Information

Gene ID 2971

Other Names

Transcription factor IIIA, TFIIIA, GTF3A

Target/Specificity

This GTF3A antibody is generated from rabbits immunized with a KLH conjugated synthetic peptide between 308-334 amino acids from the C-terminal region of human GTF3A.

Dilution

WB~~1:1000

E~~Use at an assay dependent concentration.

Format

Purified polyclonal antibody supplied in PBS with 0.09% (W/V) sodium azide. This antibody is purified through a protein A column, followed by peptide affinity purification.

Storage

Maintain refrigerated at 2-8°C for up to 2 weeks. For long term storage store at -20°C in small aliquots to prevent freeze-thaw cycles.

Precautions

GTF3A Antibody (C-term) is for research use only and not for use in diagnostic or therapeutic procedures.

GTF3A Antibody (C-term) - Protein Information

Name GTF3A

Function Involved in ribosomal large subunit biogenesis. Binds the approximately 50 base pairs

internal control region (ICR) of 5S ribosomal RNA genes. It is required for their RNA polymerase III-dependent transcription and may also maintain the transcription of other genes (PubMed:[24120868](#)). Also binds the transcribed 5S RNA's (By similarity).

Cellular Location

Nucleus.

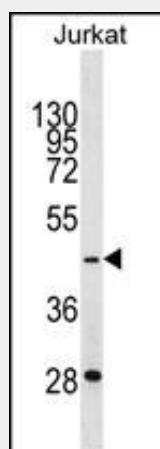
Tissue Location

Ubiquitous.

GTF3A Antibody (C-term) - Protocols

Provided below are standard protocols that you may find useful for product applications.

- [Western Blot](#)
- [Blocking Peptides](#)
- [Dot Blot](#)
- [Immunohistochemistry](#)
- [Immunofluorescence](#)
- [Immunoprecipitation](#)
- [Flow Cytometry](#)
- [Cell Culture](#)

GTF3A Antibody (C-term) - Images

GTF3A Antibody (C-term) (Cat. #AP18680b) western blot analysis in Jurkat cell line lysates (35ug/lane). This demonstrates the GTF3A antibody detected the GTF3A protein (arrow).

GTF3A Antibody (C-term) - Background

The product of this gene is a zinc finger protein with nine Cis[2]-His[2] zinc finger domains. It functions as an RNA polymerase III transcription factor to induce transcription of the 5S rRNA genes. The protein binds to a 50 bp internal promoter in the 5S genes called the internal control region (ICR), and nucleates formation of a stable preinitiation complex. This complex recruits the TFIIC and TFIIIB transcription factors and RNA polymerase III to form the complete transcription complex. The protein is thought to be translated using a non-AUG translation initiation site in mammals based on sequence analysis, protein

homology, and the size of the purified protein. [provided by RefSeq].

GTF3A Antibody (C-term) - References

Wu, C., et al. Proteomics 7(11):1775-1785(2007)
Newton-Cheh, C., et al. BMC Med. Genet. 8 SUPPL 1, S7 (2007) :
Weser, S., et al. Nucleic Acids Res. 31(9):2408-2416(2003)
Hanas, J.S., et al. Gene 282 (1-2), 43-52 (2002) :
Moreland, R.J., et al. Nucleic Acids Res. 28(9):1986-1993(2000)