

Mouse IL12b Antibody (Center)
Affinity Purified Rabbit Polyclonal Antibody (Pab)
Catalog # AP18688c**Specification**

Mouse IL12b Antibody (Center) - Product Information

| | |
|-------------------|-----------------------------|
| Application | WB,E |
| Primary Accession | P43432 |
| Other Accession | NP_032378.1 |
| Reactivity | Mouse |
| Host | Rabbit |
| Clonality | Polyclonal |
| Isotype | Rabbit IgG |
| Calculated MW | 38235 |
| Antigen Region | 196-222 |

Mouse IL12b Antibody (Center) - Additional Information**Gene ID** 16160**Other Names**

Interleukin-12 subunit beta, IL-12B, Cytotoxic lymphocyte maturation factor 40 kDa subunit, CLMF p40, IL-12 subunit p40, IL12b

Target/Specificity

This Mouse IL12b antibody is generated from rabbits immunized with a KLH conjugated synthetic peptide between 196-222 amino acids from the Central region of mouse IL12b.

Dilution

WB~~1:1000

E~~Use at an assay dependent concentration.

Format

Purified polyclonal antibody supplied in PBS with 0.09% (W/V) sodium azide. This antibody is purified through a protein A column, followed by peptide affinity purification.

Storage

Maintain refrigerated at 2-8°C for up to 2 weeks. For long term storage store at -20°C in small aliquots to prevent freeze-thaw cycles.

Precautions

Mouse IL12b Antibody (Center) is for research use only and not for use in diagnostic or therapeutic procedures.

Mouse IL12b Antibody (Center) - Protein Information**Name** IL12b

Function Cytokine that can act as a growth factor for activated T and NK cells, enhance the lytic activity of NK/lymphokine-activated killer cells, and stimulate the production of IFN-gamma by resting PBMC.

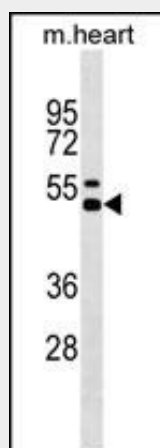
Cellular Location
Secreted.

Mouse IL12b Antibody (Center) - Protocols

Provided below are standard protocols that you may find useful for product applications.

- [Western Blot](#)
- [Blocking Peptides](#)
- [Dot Blot](#)
- [Immunohistochemistry](#)
- [Immunofluorescence](#)
- [Immunoprecipitation](#)
- [Flow Cytometry](#)
- [Cell Culture](#)

Mouse IL12b Antibody (Center) - Images



Mouse IL12b Antibody (Center) (Cat. #AP18688c) western blot analysis in mouse heart tissue lysates (35ug/lane). This demonstrates the IL12b antibody detected the IL12b protein (arrow).

Mouse IL12b Antibody (Center) - Background

Cytokine that can act as a growth factor for activated T and NK cells, enhance the lytic activity of NK/lymphokine-activated killer cells, and stimulate the production of IFN-gamma by resting PBMC (By similarity).

Associates with IL23A to form the IL-23 interleukin, an heterodimeric cytokine which functions in innate and adaptive immunity. IL-23 may constitute with IL-17 an acute response to infection in peripheral tissues. IL-23 binds to an heterodimeric receptor complex composed of IL12RB1 and IL23R, activates the Jak-Stat signaling cascade, stimulates memory rather than naive T-cells and promotes production of proinflammatory cytokines. IL-23 induces autoimmune inflammation and thus may be responsible for autoimmune inflammatory diseases and may be important for tumorigenesis.

Mouse IL12b Antibody (Center) - References

Kagami, S., et al. J. Immunol. 185(9):5453-5462(2010)
Wozniak, T.M., et al. Infect. Immun. 78(10):4187-4194(2010)
Lindsay, R.W., et al. J. Immunol. 185(3):1513-1521(2010)
Marshall, H.D., et al. J. Immunol. 185(3):1419-1428(2010)
Park, Y., et al. J. Immunol. 185(3):1476-1484(2010)