

**Mouse Pnpla3 Antibody (C-term)**  
**Affinity Purified Rabbit Polyclonal Antibody (Pab)**  
**Catalog # AP18690b****Specification**

---

**Mouse Pnpla3 Antibody (C-term) - Product Information**

|                   |                             |
|-------------------|-----------------------------|
| Application       | WB,E                        |
| Primary Accession | <a href="#">O91WW7</a>      |
| Other Accession   | <a href="#">NP_473429.2</a> |
| Reactivity        | Mouse                       |
| Host              | Rabbit                      |
| Clonality         | Polyclonal                  |
| Isotype           | Rabbit IgG                  |
| Calculated MW     | 45772                       |
| Antigen Region    | 366-393                     |

**Mouse Pnpla3 Antibody (C-term) - Additional Information****Gene ID** 116939**Other Names**

Patatin-like phospholipase domain-containing protein 3, Acylglycerol O-acyltransferase, 231-, Adiponutrin, Calcium-independent phospholipase A2-epsilon, iPLA2-epsilon, Pnpla3, Adpn

**Target/Specificity**

This Mouse Pnpla3 antibody is generated from rabbits immunized with a KLH conjugated synthetic peptide between 366-393 amino acids from the C-terminal region of mouse Pnpla3.

**Dilution**

WB~~1:1000

E~~Use at an assay dependent concentration.

**Format**

Purified polyclonal antibody supplied in PBS with 0.09% (W/V) sodium azide. This antibody is purified through a protein A column, followed by peptide affinity purification.

**Storage**

Maintain refrigerated at 2-8°C for up to 2 weeks. For long term storage store at -20°C in small aliquots to prevent freeze-thaw cycles.

**Precautions**

Mouse Pnpla3 Antibody (C-term) is for research use only and not for use in diagnostic or therapeutic procedures.

**Mouse Pnpla3 Antibody (C-term) - Protein Information****Name** Pnpla3 {ECO:0000312|MGI:MGI:2151796}

## Synonyms Adpn

**Function** Specifically catalyzes coenzyme A (CoA)-dependent acylation of 1-acyl-sn-glycerol 3-phosphate (2-lysophosphatidic acid/LPA) to generate phosphatidic acid (PA), an important metabolic intermediate and precursor for both triglycerides and glycerophospholipids. Does not esterify other lysophospholipids. Acyl donors are long chain (at least C16) fatty acyl-CoAs: arachidonoyl-CoA, linoleoyl-CoA, oleoyl-CoA and at a lesser extent palmitoyl-CoA (PubMed:[22560221](#)). Additionally possesses low triacylglycerol lipase and CoA-independent acylglycerol transacylase activities and thus may play a role in acyl-chain remodeling of triglycerides (By similarity). In vitro may express hydrolytic activity against glycerolipids triacylglycerol, diacylglycerol and monoacylglycerol, with a strong preference for oleic acid as the acyl moiety (By similarity). However, the triacylglycerol hydrolase activity is controversial and may be very low (PubMed:[22560221](#)). Possesses phospholipase A2 activity (By similarity).

## Cellular Location

Membrane; Single-pass membrane protein. Lipid droplet

## Tissue Location

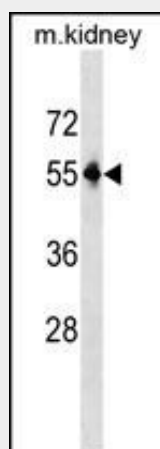
Restricted to adipose tissue. Expressed in inguinal and epididymal white adipose tissues and in interscapular brown adipose tissue (PubMed:11431482). Also expressed in liver in response to high- sucrose diet (PubMed:22560221).

## Mouse Pnpla3 Antibody (C-term) - Protocols

Provided below are standard protocols that you may find useful for product applications.

- [Western Blot](#)
- [Blocking Peptides](#)
- [Dot Blot](#)
- [Immunohistochemistry](#)
- [Immunofluorescence](#)
- [Immunoprecipitation](#)
- [Flow Cytometry](#)
- [Cell Culture](#)

## Mouse Pnpla3 Antibody (C-term) - Images



Mouse Pnpla3 Antibody (C-term) (Cat. #AP18690b) western blot analysis in mouse kidney tissue lysates (35ug/lane). This demonstrates the Pnpla3 antibody detected the Pnpla3 protein (arrow).

**Mouse Pnpla3 Antibody (C-term) - Background**

Multifunctional enzyme which has both triacylglycerol lipase and acylglycerol O-acyltransferase activities (By similarity).

**Mouse Pnpla3 Antibody (C-term) - References**

Chen, W., et al. Hepatology 52(3):1134-1142(2010)  
Hoekstra, M., et al. J. Hepatol. 52(2):244-251(2010)  
Kershaw, E.E., et al. Diabetes 55(1):148-157(2006)  
Baulande, S., et al. J. Biol. Chem. 276(36):33336-33344(2001)