

**GMCL1L Antibody (C-term)**  
**Affinity Purified Rabbit Polyclonal Antibody (Pab)**  
**Catalog # AP18726b**

**Specification**

---

**GMCL1L Antibody (C-term) - Product Information**

Application	WB,E
Primary Accession	<a href="#">Q8NEA9</a>
Reactivity	Human
Host	Rabbit
Clonality	Polyclonal
Isotype	Rabbit IgG
Calculated MW	60299
Antigen Region	498-524

**GMCL1L Antibody (C-term) - Additional Information**

**Other Names**

Putative germ cell-less protein-like 1-like, GMCL1P1, GCL, GMCL1L

**Target/Specificity**

This GMCL1L antibody is generated from rabbits immunized with a KLH conjugated synthetic peptide between 498-524 amino acids from the C-terminal region of human GMCL1L.

**Dilution**

WB~~1:1000

**Format**

Purified polyclonal antibody supplied in PBS with 0.09% (W/V) sodium azide. This antibody is purified through a protein A column, followed by peptide affinity purification.

**Storage**

Maintain refrigerated at 2-8°C for up to 2 weeks. For long term storage store at -20°C in small aliquots to prevent freeze-thaw cycles.

**Precautions**

GMCL1L Antibody (C-term) is for research use only and not for use in diagnostic or therapeutic procedures.

**GMCL1L Antibody (C-term) - Protein Information**

**Name** GMCL2 ([HGNC:19717](#))

**Synonyms** GCL, GMCL1L, GMCL1P1

**Function** Possible function in spermatogenesis. Probable substrate- specific adapter of an E3 ubiquitin-protein ligase complex which mediates the ubiquitination and subsequent proteasomal degradation of target proteins (PubMed:[14528312](#)).

**Cellular Location**

Nucleus matrix {ECO:0000250|UniProtKB:Q920G9}.

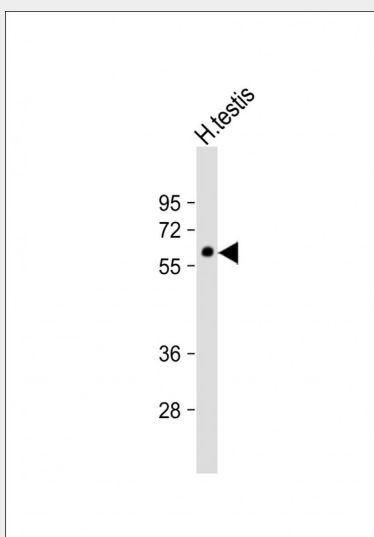
**Tissue Location**

Expressed predominantly in testis.

**GMCL1L Antibody (C-term) - Protocols**

Provided below are standard protocols that you may find useful for product applications.

- [Western Blot](#)
- [Blocking Peptides](#)
- [Dot Blot](#)
- [Immunohistochemistry](#)
- [Immunofluorescence](#)
- [Immunoprecipitation](#)
- [Flow Cytometry](#)
- [Cell Culture](#)

**GMCL1L Antibody (C-term) - Images**

Anti-GMCL1L Antibody (C-term) at 1:1000 dilution + human testis lysate Lysates/proteins at 20 µg per lane. Secondary Goat Anti-Rabbit IgG, (H+L), Peroxidase conjugated at 1/10000 dilution. Predicted band size : 60 kDa Blocking/Dilution buffer: 5% NFDm/TBST.

**GMCL1L Antibody (C-term) - Background**

GMCL1L is possible function in spermatogenesis. Enhances the degradation of MDM2 and increases the amount of p53 probably by modulating the nucleocytoplasmic transport (By similarity). Probable substrate-specific adapter of an E3 ubiquitin-protein ligase complex which mediates the ubiquitination and subsequent proteasomal degradation of target proteins.