

CLN8 Antibody (C-term)
Affinity Purified Rabbit Polyclonal Antibody (Pab)
Catalog # AP18729b**Specification**

CLN8 Antibody (C-term) - Product Information

Application	WB,E
Primary Accession	Q9UBY8
Other Accession	NP_061764.2
Reactivity	Human
Host	Rabbit
Clonality	Polyclonal
Isotype	Rabbit IgG
Calculated MW	32787
Antigen Region	251-280

CLN8 Antibody (C-term) - Additional Information**Gene ID** 2055**Other Names**

Protein CLN8, CLN8, C8orf61

Target/Specificity

This CLN8 antibody is generated from rabbits immunized with a KLH conjugated synthetic peptide between 251-280 amino acids from the C-terminal region of human CLN8.

Dilution

WB~~1:1000

E~~Use at an assay dependent concentration.

Format

Purified polyclonal antibody supplied in PBS with 0.09% (W/V) sodium azide. This antibody is purified through a protein A column, followed by peptide affinity purification.

Storage

Maintain refrigerated at 2-8°C for up to 2 weeks. For long term storage store at -20°C in small aliquots to prevent freeze-thaw cycles.

Precautions

CLN8 Antibody (C-term) is for research use only and not for use in diagnostic or therapeutic procedures.

CLN8 Antibody (C-term) - Protein Information**Name** CLN8**Synonyms** C8orf61

Function Could play a role in cell proliferation during neuronal differentiation and in protection against cell death.

Cellular Location

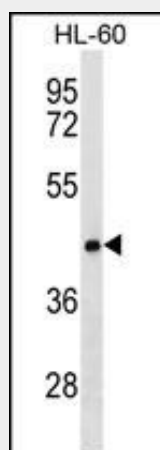
Endoplasmic reticulum membrane; Multi-pass membrane protein. Endoplasmic reticulum-Golgi intermediate compartment membrane; Multi-pass membrane protein. Endoplasmic reticulum

CLN8 Antibody (C-term) - Protocols

Provided below are standard protocols that you may find useful for product applications.

- [Western Blot](#)
- [Blocking Peptides](#)
- [Dot Blot](#)
- [Immunohistochemistry](#)
- [Immunofluorescence](#)
- [Immunoprecipitation](#)
- [Flow Cytometry](#)
- [Cell Culture](#)

CLN8 Antibody (C-term) - Images



CLN8 Antibody (C-term)(Cat. #AP18729b) western blot analysis in HL-60 cell line lysates (35ug/lane). This demonstrates the CLN8 antibody detected the CLN8 protein (arrow).

CLN8 Antibody (C-term) - Background

This gene encodes a transmembrane protein belonging to a family of proteins containing TLC domains, which are postulated to function in lipid synthesis, transport, or sensing. The protein localizes to the endoplasmic reticulum (ER), and may recycle between the ER and ER-Golgi intermediate compartment. Mutations in this gene are associated with progressive epilepsy with mental retardation (EMPR), which is a subtype of neuronal ceroid lipofuscinoses (NCL). Patients with mutations in this gene have altered levels of sphingolipid and phospholipids in the brain.

CLN8 Antibody (C-term) - References

Reinhardt, K., et al. Clin. Genet. 77(1):79-85(2010)

Vantaggiato, C., et al. Hum. Mutat. 30(7):1104-1116(2009)

Kousi, M., et al. Brain 132 (PT 3), 810-819 (2009) :

Striano, P., et al. Epilepsy Behav 10(1):187-191(2007)

Hermansson, M., et al. J. Neurochem. 95(3):609-617(2005)