

GSC Antibody (N-term)
Affinity Purified Rabbit Polyclonal Antibody (Pab)
Catalog # AP18734a**Specification**

GSC Antibody (N-term) - Product Information

Application	WB,E
Primary Accession	P56915
Other Accession	Q02591 , NP_776248.1
Reactivity	Mouse
Host	Rabbit
Clonality	Polyclonal
Isotype	Rabbit IgG
Calculated MW	28150
Antigen Region	38-65

GSC Antibody (N-term) - Additional Information**Gene ID** 145258**Other Names**

Homeobox protein goosecoid, GSC

Target/Specificity

This GSC antibody is generated from rabbits immunized with a KLH conjugated synthetic peptide between 38-65 amino acids from the N-terminal region of human GSC.

Dilution

WB~~1:1000

Format

Purified polyclonal antibody supplied in PBS with 0.09% (W/V) sodium azide. This antibody is purified through a protein A column, followed by peptide affinity purification.

Storage

Maintain refrigerated at 2-8°C for up to 2 weeks. For long term storage store at -20°C in small aliquots to prevent freeze-thaw cycles.

Precautions

GSC Antibody (N-term) is for research use only and not for use in diagnostic or therapeutic procedures.

GSC Antibody (N-term) - Protein Information**Name** GSC

Function Regulates chordin (CHRD). May play a role in spatial programming within discrete embryonic fields or lineage compartments during organogenesis. In concert with NKX3-2, plays a

role in defining the structural components of the middle ear; required for the development of the entire tympanic ring (By similarity). Probably involved in the regulatory networks that define neural crest cell fate specification and determine mesoderm cell lineages in mammals.

Cellular Location

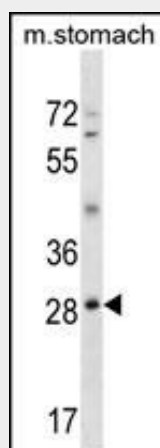
Nucleus.

GSC Antibody (N-term) - Protocols

Provided below are standard protocols that you may find useful for product applications.

- [Western Blot](#)
- [Blocking Peptides](#)
- [Dot Blot](#)
- [Immunohistochemistry](#)
- [Immunofluorescence](#)
- [Immunoprecipitation](#)
- [Flow Cytometry](#)
- [Cell Culture](#)

GSC Antibody (N-term) - Images



GSC Antibody (N-term)(Cat. #AP18734a) western blot analysis in mouse stomach tissue lysates (35ug/lane). This demonstrates the GSC antibody detected the GSC protein (arrow).

GSC Antibody (N-term) - Background

This gene encodes a member of the bicoid subfamily of the paired (PRD) homeobox family of proteins. The encoded protein acts as a transcription factor and may be autoregulatory. A similar protein in mice plays a role in craniofacial and rib cage development during embryogenesis.

GSC Antibody (N-term) - References

- Zhang, Q., et al. *Plast. Reconstr. Surg.* 125(3):979-987(2010)
Paterson, A.D., et al. *Diabetes* 59(2):539-549(2010)
Zhang, Q.G., et al. *Plast. Reconstr. Surg.* 124(4):1157-1164(2009)
Schlade-Bartusiak, K., et al. *Am. J. Med. Genet. A* 146A (1), 117-123 (2008) :
Hartwell, K.A., et al. *Proc. Natl. Acad. Sci. U.S.A.* 103(50):18969-18974(2006)