

CLEC6A Antibody (C-term)
Affinity Purified Rabbit Polyclonal Antibody (Pab)
Catalog # AP18742b**Specification**

CLEC6A Antibody (C-term) - Product Information

Application	WB,E
Primary Accession	Q6EIG7
Other Accession	NP_001007034.1
Reactivity	Human
Host	Rabbit
Clonality	Polyclonal
Isotype	Rabbit IgG
Calculated MW	23998
Antigen Region	137-163

CLEC6A Antibody (C-term) - Additional Information**Gene ID** 93978**Other Names**

C-type lectin domain family 6 member A, C-type lectin superfamily member 10, Dendritic cell-associated C-type lectin 2, DC-associated C-type lectin 2, Dectin-2, CLEC6A, CLECSF10, DECTIN2

Target/Specificity

This CLEC6A antibody is generated from rabbits immunized with a KLH conjugated synthetic peptide between 137-163 amino acids from the C-terminal region of human CLEC6A.

Dilution

WB~~1:1000

Format

Purified polyclonal antibody supplied in PBS with 0.09% (W/V) sodium azide. This antibody is purified through a protein A column, followed by peptide affinity purification.

Storage

Maintain refrigerated at 2-8°C for up to 2 weeks. For long term storage store at -20°C in small aliquots to prevent freeze-thaw cycles.

Precautions

CLEC6A Antibody (C-term) is for research use only and not for use in diagnostic or therapeutic procedures.

CLEC6A Antibody (C-term) - Protein Information**Name** CLEC6A ([HGNC:14556](#))

Function Calcium-dependent lectin that acts as a pattern recognition receptor (PRR) of the innate immune system: specifically recognizes and binds alpha-mannans on *C.albicans* hyphae (PubMed:[23911656](#), PubMed:[28652405](#)). Binding of *C.albicans* alpha-mannans to this receptor complex leads to phosphorylation of the immunoreceptor tyrosine-based activation motif (ITAM) of FCER1G, triggering activation of SYK, CARD9 and NF-kappa-B, consequently driving maturation of antigen-presenting cells and shaping antigen-specific priming of T-cells toward effector T-helper 1 and T-helper 17 cell subtypes (By similarity). Recognizes also, in a mannose-dependent manner, allergens from house dust mite and fungi, by promoting cysteinyl leukotriene production (By similarity). Recognizes soluble elements from the eggs of *Shistosoma mansoni* altering adaptive immune responses (By similarity).

Cellular Location

Cell membrane; Single-pass type II membrane protein

Tissue Location

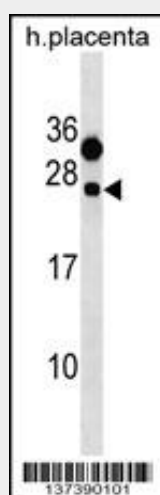
Expressed in lung, spleen, lymph node, leukocytes, bone marrow, tonsils and dendritic cells. Strongly expressed in purified monocytes and weakly in B-cells. In peripheral blood cells, preferentially expressed in plasmacytoids rather than myeloids

CLEC6A Antibody (C-term) - Protocols

Provided below are standard protocols that you may find useful for product applications.

- [Western Blot](#)
- [Blocking Peptides](#)
- [Dot Blot](#)
- [Immunohistochemistry](#)
- [Immunofluorescence](#)
- [Immunoprecipitation](#)
- [Flow Cytometry](#)
- [Cell Culture](#)

CLEC6A Antibody (C-term) - Images



CLEC6A Antibody (C-term)(Cat. #AP18742b) western blot analysis in human placenta tissue lysates (35ug/lane). This demonstrates the CLEC6A antibody detected the CLEC6A protein (arrow).

CLEC6A Antibody (C-term) - Background

Like dectin-1 (CLEC7A; MIM 606264), CLEC6A, or dectin-2, is a type II membrane receptor with an extracellular C-type lectin-like domain fold. However, unlike dectin-1, dectin-2 lacks an immunoreceptor tyrosine-based activation motif (ITAM) in its cytoplasmic domain (Kanazawa et al., 2004 [PubMed 15175046]).

CLEC6A Antibody (C-term) - References

Gavino, A.C., et al. Exp. Dermatol. 14(4):281-288(2005)
Flornes, L.M., et al. Immunogenetics 56(7):506-517(2004)
Kanazawa, N., et al. J. Invest. Dermatol. 122(6):1522-1524(2004)