

**RNF122 Antibody (Center)**  
**Affinity Purified Rabbit Polyclonal Antibody (Pab)**  
**Catalog # AP18745c****Specification**

---

**RNF122 Antibody (Center) - Product Information**

Application	WB,E
Primary Accession	<a href="#">Q9H9V4</a>
Other Accession	<a href="#">Q8BP31</a> , <a href="#">NP_079063.2</a>
Reactivity	Human
Predicted	Mouse
Host	Rabbit
Clonality	Polyclonal
Isotype	Rabbit IgG
Calculated MW	17475
Antigen Region	84-110

**RNF122 Antibody (Center) - Additional Information****Gene ID** 79845**Other Names**

RING finger protein 122, RNF122

**Target/Specificity**

This RNF122 antibody is generated from rabbits immunized with a KLH conjugated synthetic peptide between 84-110 amino acids from the Central region of human RNF122.

**Dilution**

WB~~1:1000

E~~Use at an assay dependent concentration.

**Format**

Purified polyclonal antibody supplied in PBS with 0.09% (W/V) sodium azide. This antibody is purified through a protein A column, followed by peptide affinity purification.

**Storage**

Maintain refrigerated at 2-8°C for up to 2 weeks. For long term storage store at -20°C in small aliquots to prevent freeze-thaw cycles.

**Precautions**

RNF122 Antibody (Center) is for research use only and not for use in diagnostic or therapeutic procedures.

**RNF122 Antibody (Center) - Protein Information****Name** RNF122

**Function** May induce necrosis and apoptosis. May play a role in cell viability.

**Cellular Location**

Golgi apparatus. Endoplasmic reticulum. Membrane; Single-pass membrane protein

**Tissue Location**

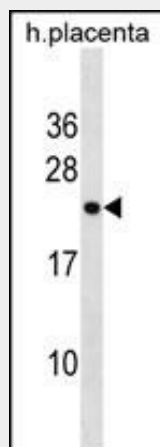
Widely expressed in several tissues and cell lines.

**RNF122 Antibody (Center) - Protocols**

Provided below are standard protocols that you may find useful for product applications.

- [Western Blot](#)
- [Blocking Peptides](#)
- [Dot Blot](#)
- [Immunohistochemistry](#)
- [Immunofluorescence](#)
- [Immunoprecipitation](#)
- [Flow Cytometry](#)
- [Cell Culture](#)

**RNF122 Antibody (Center) - Images**



RNF122 Antibody (Center)(Cat. #AP18745c) western blot analysis in human placenta tissue lysates (35ug/lane). This demonstrates the RNF122 antibody detected the RNF122 protein (arrow).

**RNF122 Antibody (Center) - Background**

The protein encoded by this gene contains a RING finger, a motif present in a variety of functionally distinct proteins and known to be involved in protein-protein and protein-DNA interactions.

**RNF122 Antibody (Center) - References**

Wang, L., et al. Beijing Da Xue Xue Bao 38(3):239-243(2006)  
Wang, L., et al. J Biomol Screen 11(4):369-376(2006)  
Saurin, A.J., et al. Trends Biochem. Sci. 21(6):208-214(1996)  
Koyama, K., et al. Genomics 26(2):245-253(1995)