

**RPA4 Antibody (C-term)**  
**Affinity Purified Rabbit Polyclonal Antibody (Pab)**  
**Catalog # AP18746b****Specification**

---

**RPA4 Antibody (C-term) - Product Information**

Application	WB,E
Primary Accession	<a href="#">Q13156</a>
Other Accession	<a href="#">NP_037479.1</a>
Reactivity	Human
Host	Rabbit
Clonality	Polyclonal
Isotype	Rabbit IgG
Calculated MW	28868
Antigen Region	234-261

**RPA4 Antibody (C-term) - Additional Information****Gene ID** 29935**Other Names**

Replication protein A 30 kDa subunit, RP-A p30, Replication factor A protein 4, RF-A protein 4, RPA4

**Target/Specificity**

This RPA4 antibody is generated from rabbits immunized with a KLH conjugated synthetic peptide between 234-261 amino acids from the C-terminal region of human RPA4.

**Dilution**

WB~~1:1000

E~~Use at an assay dependent concentration.

**Format**

Purified polyclonal antibody supplied in PBS with 0.09% (W/V) sodium azide. This antibody is purified through a protein A column, followed by peptide affinity purification.

**Storage**

Maintain refrigerated at 2-8°C for up to 2 weeks. For long term storage store at -20°C in small aliquots to prevent freeze-thaw cycles.

**Precautions**

RPA4 Antibody (C-term) is for research use only and not for use in diagnostic or therapeutic procedures.

**RPA4 Antibody (C-term) - Protein Information****Name** RPA4

**Function** As part of the alternative replication protein A complex, aRPA, binds single-stranded DNA and probably plays a role in DNA repair. Compared to the RPA2-containing, canonical RPA complex, may not support chromosomal DNA replication and cell cycle progression through S-phase. The aRPA may not promote efficient priming by DNA polymerase alpha but could support DNA polymerase delta synthesis in the presence of PCNA and replication factor C (RFC), the dual incision/excision reaction of nucleotide excision repair and RAD51-dependent strand exchange.

**Cellular Location**

Nucleus. Note=Localizes to DNA repair foci after DNA damage

**Tissue Location**

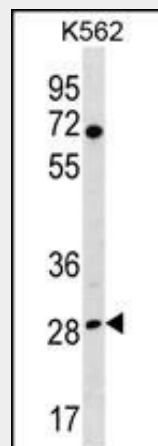
Preferentially expressed in placental and colon mucosa. Widely expressed at intermediate or lower levels

**RPA4 Antibody (C-term) - Protocols**

Provided below are standard protocols that you may find useful for product applications.

- [Western Blot](#)
- [Blocking Peptides](#)
- [Dot Blot](#)
- [Immunohistochemistry](#)
- [Immunofluorescence](#)
- [Immunoprecipitation](#)
- [Flow Cytometry](#)
- [Cell Culture](#)

**RPA4 Antibody (C-term) - Images**



RPA4 Antibody (C-term)(Cat. #AP18746b) western blot analysis in K562 cell line lysates (35ug/lane). This demonstrates the RPA4 antibody detected the RPA4 protein (arrow).

**RPA4 Antibody (C-term) - Background**

This gene encodes a single-stranded DNA-binding protein that is the 30-kDa subunit of the replication protein A complex. Replication protein A is an essential factor for DNA double-strand break repair and cell cycle checkpoint activation. The encoded protein localizes to DNA repair foci and may be involved in the cellular DNA damage response. This protein may also play a role in

inhibiting viral replication.

#### **RPA4 Antibody (C-term) - References**

Kemp, M.G., et al. J. Biol. Chem. 285(7):4788-4797(2010)  
Guey, L.T., et al. Eur. Urol. 57(2):283-292(2010)  
Haring, S.J., et al. Nucleic Acids Res. 38(3):846-858(2010)  
Shen, M., et al. Environ. Mol. Mutagen. 50(4):285-290(2009)  
Mason, A.C., et al. J. Biol. Chem. 284(8):5324-5331(2009)