

TPD52L1 Antibody (N-term)
Affinity Purified Rabbit Polyclonal Antibody (Pab)
Catalog # AP18751a

Specification

TPD52L1 Antibody (N-term) - Product Information

Application	WB,E
Primary Accession	Q16890
Other Accession	O54818 , NP_001003395.1
Reactivity	Mouse
Host	Rabbit
Clonality	Polyclonal
Isotype	Rabbit IgG
Calculated MW	22449
Antigen Region	43-70

TPD52L1 Antibody (N-term) - Additional Information

Gene ID 7164

Other Names

Tumor protein D53, hD53, Tumor protein D52-like 1, TPD52L1

Target/Specificity

This TPD52L1 antibody is generated from rabbits immunized with a KLH conjugated synthetic peptide between 43-70 amino acids from the N-terminal region of human TPD52L1.

Dilution

WB~~1:1000

E~~Use at an assay dependent concentration.

Format

Purified polyclonal antibody supplied in PBS with 0.09% (W/V) sodium azide. This antibody is purified through a protein A column, followed by peptide affinity purification.

Storage

Maintain refrigerated at 2-8°C for up to 2 weeks. For long term storage store at -20°C in small aliquots to prevent freeze-thaw cycles.

Precautions

TPD52L1 Antibody (N-term) is for research use only and not for use in diagnostic or therapeutic procedures.

TPD52L1 Antibody (N-term) - Protein Information

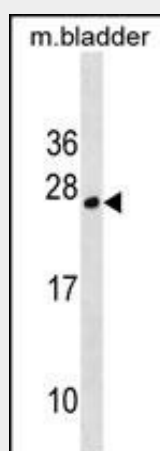
Name TPD52L1

TPD52L1 Antibody (N-term) - Protocols

Provided below are standard protocols that you may find useful for product applications.

- [Western Blot](#)
- [Blocking Peptides](#)
- [Dot Blot](#)
- [Immunohistochemistry](#)
- [Immunofluorescence](#)
- [Immunoprecipitation](#)
- [Flow Cytometry](#)
- [Cell Culture](#)

TPD52L1 Antibody (N-term) - Images



TPD52L1 Antibody (N-term)(Cat. #AP18751a) western blot analysis in mouse bladder tissue lysates (35ug/lane). This demonstrates the TPD52L1 antibody detected the TPD52L1 protein (arrow).

TPD52L1 Antibody (N-term) - Background

This gene encodes a member of the tumor protein D52 (TPD52) family. The encoded protein contains a coiled-coil domain and may form homo- or hetero-dimer with TPD52 family members. The protein is reported to be involved in cell proliferation and calcium signaling. It also interacts with the mitogen-activated protein kinase kinase kinase 5 (MAP3K5/ASK1) and positively regulates MAP3K5-induced apoptosis. Multiple alternatively spliced transcript variants have been observed, but the full-length nature of some variants has not yet been determined.

TPD52L1 Antibody (N-term) - References

- Barbaric, D., et al. Leuk. Res. 30(11):1355-1363(2006)
Cao, Q., et al. Biochem. Biophys. Res. Commun. 344(3):798-806(2006)
Boutros, R., et al. Exp. Cell Res. 310(1):152-165(2005)
Cho, S., et al. J. Biol. Chem. 279(16):16050-16056(2004)
Boutros, R., et al. J. Mol. Biol. 332(3):675-687(2003)