

**Mouse Cst3 Antibody (Center)**  
**Affinity Purified Rabbit Polyclonal Antibody (Pab)**  
**Catalog # AP18754c**

**Specification**

---

**Mouse Cst3 Antibody (Center) - Product Information**

Application	WB,E
Primary Accession	<a href="#">P21460</a>
Other Accession	<a href="#">P14841</a> , <a href="#">NP_034106.2</a>
Reactivity	Mouse
Predicted	Rat
Host	Rabbit
Clonality	Polyclonal
Isotype	Rabbit IgG
Calculated MW	15531
Antigen Region	39-65

**Mouse Cst3 Antibody (Center) - Additional Information**

**Gene ID** 13010

**Other Names**

Cystatin-C, Cystatin-3, Cst3

**Target/Specificity**

This Mouse Cst3 antibody is generated from rabbits immunized with a KLH conjugated synthetic peptide between 39-65 amino acids from the Central region of mouse Cst3.

**Dilution**

WB~~1:1000

**Format**

Purified polyclonal antibody supplied in PBS with 0.09% (W/V) sodium azide. This antibody is purified through a protein A column, followed by peptide affinity purification.

**Storage**

Maintain refrigerated at 2-8°C for up to 2 weeks. For long term storage store at -20°C in small aliquots to prevent freeze-thaw cycles.

**Precautions**

Mouse Cst3 Antibody (Center) is for research use only and not for use in diagnostic or therapeutic procedures.

**Mouse Cst3 Antibody (Center) - Protein Information**

**Name** Cst3

**Function** As an inhibitor of cysteine proteinases, this protein is thought to serve an important

physiological role as a local regulator of this enzyme activity.

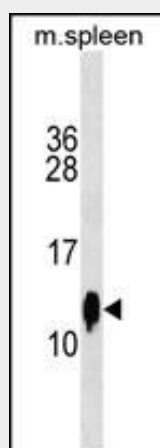
#### **Cellular Location** Secreted.

### **Mouse Cst3 Antibody (Center) - Protocols**

Provided below are standard protocols that you may find useful for product applications.

- [Western Blot](#)
- [Blocking Peptides](#)
- [Dot Blot](#)
- [Immunohistochemistry](#)
- [Immunofluorescence](#)
- [Immunoprecipitation](#)
- [Flow Cytometry](#)
- [Cell Culture](#)

### **Mouse Cst3 Antibody (Center) - Images**



Mouse Cst3 Antibody (Center)(Cat. #AP18754c) western blot analysis in mouse spleen tissue lysates (35ug/lane). This demonstrates the Cst3 antibody detected the Cst3 protein (arrow).

### **Mouse Cst3 Antibody (Center) - Background**

As an inhibitor of cysteine proteinases, this protein is thought to serve an important physiological role as a local regulator of this enzyme activity.

### **Mouse Cst3 Antibody (Center) - References**

- Schulte, S., et al. Am. J. Pathol. 177(1):456-463(2010)  
Baston-Buest, D.M., et al. Reproduction 139(4):741-748(2010)  
Freudeus, K.H., et al. Int. J. Biochem. Cell Biol. 41(11):2262-2269(2009)  
Trimarchi, J.M., et al. Dev. Dyn. 238(9):2327-2329(2009)  
Sun, B., et al. Neuron 60(2):247-257(2008)