

ATXN1L Antibody (Center)
Affinity Purified Rabbit Polyclonal Antibody (Pab)
Catalog # AP18768C**Specification**

ATXN1L Antibody (Center) - Product Information

Application	WB,E
Primary Accession	P0C7T5
Other Accession	P0C7T6 , NP_001131147.1
Reactivity	Human
Predicted	Mouse
Host	Rabbit
Clonality	Polyclonal
Isotype	Rabbit IgG
Calculated MW	73306
Antigen Region	385-411

ATXN1L Antibody (Center) - Additional Information**Gene ID** 342371**Other Names**

Ataxin-1-like, Brother of ataxin-1, Brother of ATXN1, ATXN1L, BOAT, BOAT1

Target/Specificity

This ATXN1L antibody is generated from rabbits immunized with a KLH conjugated synthetic peptide between 385-411 amino acids from the Central region of human ATXN1L.

Dilution

WB~~1:1000

E~~Use at an assay dependent concentration.

Format

Purified polyclonal antibody supplied in PBS with 0.09% (W/V) sodium azide. This antibody is purified through a protein A column, followed by peptide affinity purification.

Storage

Maintain refrigerated at 2-8°C for up to 2 weeks. For long term storage store at -20°C in small aliquots to prevent freeze-thaw cycles.

Precautions

ATXN1L Antibody (Center) is for research use only and not for use in diagnostic or therapeutic procedures.

ATXN1L Antibody (Center) - Protein Information**Name** ATXN1L

Synonyms BOAT, BOAT1

Function Chromatin-binding factor that repress Notch signaling in the absence of Notch intracellular domain by acting as a CBF1 corepressor. Binds to the HEY promoter and might assist, along with NCOR2, RBPJ- mediated repression (PubMed:[21475249](#)). Can suppress ATXN1 cytotoxicity in spinocerebellar ataxia type 1 (SCA1). In concert with CIC and ATXN1, involved in brain development (By similarity).

Cellular Location

Nucleus. Cell projection, dendrite. Note=Forms nuclear foci. Colocalizes with NCOR2 and HDAC3. Distributed beyond the nucleus into the cell body and dendrites in Purkinje cells and in inferior olive cells

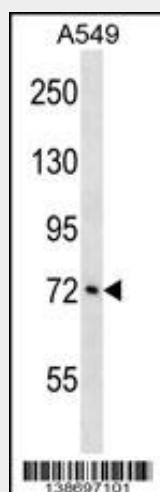
Tissue Location

Expressed in cerebellum and cerebral cortex.

ATXN1L Antibody (Center) - Protocols

Provided below are standard protocols that you may find useful for product applications.

- [Western Blot](#)
- [Blocking Peptides](#)
- [Dot Blot](#)
- [Immunohistochemistry](#)
- [Immunofluorescence](#)
- [Immunoprecipitation](#)
- [Flow Cytometry](#)
- [Cell Culture](#)

ATXN1L Antibody (Center) - Images

ATXN1L Antibody (Center)(Cat. #AP18768c) western blot analysis in A549 cell line lysates (35ug/lane). This demonstrates the ATXN1L antibody detected the ATXN1L protein (arrow).

ATXN1L Antibody (Center) - Background

ATXN1L can suppress the cytotoxicity of ATXN1 in spinocerebellar ataxia type 1 (SCA1) (By similarity).

ATXN1L Antibody (Center) - References

Bowman, A.B., et al. Nat. Genet. 39(3):373-379(2007)
Mizutani, A., et al. EMBO J. 24(18):3339-3351(2005)
Venter, J.C., et al. Science 291(5507):1304-1351(2001)