

B7H6 Antibody (C-term)
Affinity Purified Rabbit Polyclonal Antibody (Pab)
Catalog # AP18769b**Specification**

B7H6 Antibody (C-term) - Product Information

Application	WB,E
Primary Accession	Q68D85
Other Accession	NP_001189368.1
Reactivity	Human
Host	Rabbit
Clonality	Polyclonal
Isotype	Rabbit IgG
Antigen Region	389-415

B7H6 Antibody (C-term) - Additional Information**Gene ID** 374383**Other Names**

Natural cytotoxicity triggering receptor 3 ligand 1, B7 homolog 6, B7-H6, NCR3LG1, B7H6

Target/Specificity

This B7H6 antibody is generated from rabbits immunized with a KLH conjugated synthetic peptide between 389-415 amino acids from the C-terminal region of human B7H6.

Dilution

WB~~1:2000

E~~Use at an assay dependent concentration.

Format

Purified polyclonal antibody supplied in PBS with 0.09% (W/V) sodium azide. This antibody is purified through a protein A column, followed by peptide affinity purification.

Storage

Maintain refrigerated at 2-8°C for up to 2 weeks. For long term storage store at -20°C in small aliquots to prevent freeze-thaw cycles.

Precautions

B7H6 Antibody (C-term) is for research use only and not for use in diagnostic or therapeutic procedures.

B7H6 Antibody (C-term) - Protein Information**Name** NCR3LG1**Synonyms** B7H6

Function Triggers NCR3-dependent natural killer cell activation.

Cellular Location

Cell membrane; Single-pass type I membrane protein

Tissue Location

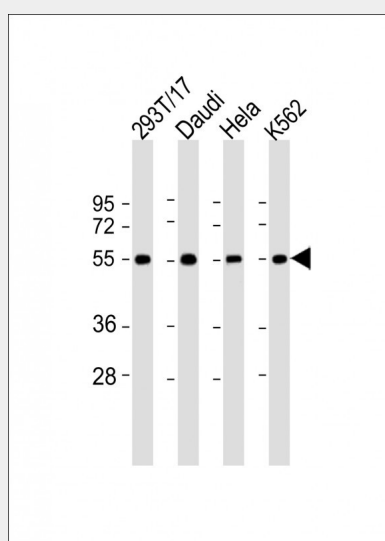
Not detected in any normal tissue tested. Expressed at the surface of several tumor cell lines including T and B-lymphomas, myeloid leukemias, melanomas, carcinomas and large T SV40 antigen- transformed cells (at protein level).

B7H6 Antibody (C-term) - Protocols

Provided below are standard protocols that you may find useful for product applications.

- [Western Blot](#)
- [Blocking Peptides](#)
- [Dot Blot](#)
- [Immunohistochemistry](#)
- [Immunofluorescence](#)
- [Immunoprecipitation](#)
- [Flow Cytometry](#)
- [Cell Culture](#)

B7H6 Antibody (C-term) - Images



All lanes : Anti-B7H6 Antibody (C-term) at 1:2000 dilution Lane 1: 293T/17 whole cell lysate Lane 2: Daudi whole cell lysate Lane 3: HeLa whole cell lysate Lane 4: K562 whole cell lysate Lysates/proteins at 20 µg per lane. Secondary Goat Anti-Rabbit IgG, (H+L), Peroxidase conjugated at 1/10000 dilution. Predicted band size : 51 kDa Blocking/Dilution buffer: 5% NFDM/TBST.

B7H6 Antibody (C-term) - Background

Triggers NCR3-dependent natural killer cell activation.

B7H6 Antibody (C-term) - Citations

- [B7-H6 expression is induced by lipopolysaccharide and facilitates cancer invasion and metastasis in human gliomas.](#)

