

CCDC144C Antibody (C-term)
Affinity Purified Rabbit Polyclonal Antibody (Pab)
Catalog # AP18771b

Specification

CCDC144C Antibody (C-term) - Product Information

Application	WB,E
Primary Accession	Q8IYA2
Reactivity	Human
Host	Rabbit
Clonality	Polyclonal
Isotype	Rabbit IgG
Calculated MW	143112
Antigen Region	1064-1090

CCDC144C Antibody (C-term) - Additional Information

Other Names

Putative coiled-coil domain-containing protein 144C, Coiled-coil domain-containing protein 144C pseudogene, CCDC144CP, CCDC144C

Target/Specificity

This CCDC144C antibody is generated from rabbits immunized with a KLH conjugated synthetic peptide between 1064-1090 amino acids from the C-terminal region of human CCDC144C.

Dilution

WB~~1:1000

Format

Purified polyclonal antibody supplied in PBS with 0.09% (W/V) sodium azide. This antibody is purified through a protein A column, followed by peptide affinity purification.

Storage

Maintain refrigerated at 2-8°C for up to 2 weeks. For long term storage store at -20°C in small aliquots to prevent freeze-thaw cycles.

Precautions

CCDC144C Antibody (C-term) is for research use only and not for use in diagnostic or therapeutic procedures.

CCDC144C Antibody (C-term) - Protein Information

Name CCDC144CP

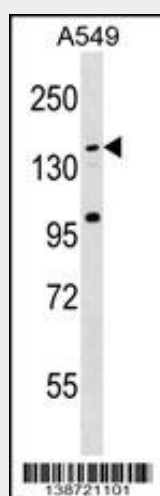
Synonyms CCDC144C

CCDC144C Antibody (C-term) - Protocols

Provided below are standard protocols that you may find useful for product applications.

- [Western Blot](#)
- [Blocking Peptides](#)
- [Dot Blot](#)
- [Immunohistochemistry](#)
- [Immunofluorescence](#)
- [Immunoprecipitation](#)
- [Flow Cytometry](#)
- [Cell Culture](#)

CCDC144C Antibody (C-term) - Images



CCDC144C Antibody (C-term)(Cat. #AP18771b) western blot analysis in A549 cell line lysates (35ug/lane). This demonstrates the CCDC144C antibody detected the CCDC144C protein (arrow).

CCDC144C Antibody (C-term) - Background

The function of this protein remains unknown.