

CUX1 Antibody (C-term)
Affinity Purified Rabbit Polyclonal Antibody (Pab)
Catalog # AP18776B

Specification

CUX1 Antibody (C-term) - Product Information

Application	WB,E
Primary Accession	Q13948
Other Accession	P70403 , NP_001904.2
Reactivity	Human
Predicted	Mouse
Host	Rabbit
Clonality	Polyclonal
Isotype	Rabbit IgG
Calculated MW	77455
Antigen Region	640-666

CUX1 Antibody (C-term) - Additional Information

Gene ID 1523

Other Names

Protein CASP, CUX1, CUTL1

Target/Specificity

This CUX1 antibody is generated from rabbits immunized with a KLH conjugated synthetic peptide between 640-666 amino acids from the C-terminal region of human CUX1.

Dilution

WB~~1:1000

E~~Use at an assay dependent concentration.

Format

Purified polyclonal antibody supplied in PBS with 0.09% (W/V) sodium azide. This antibody is purified through a protein A column, followed by peptide affinity purification.

Storage

Maintain refrigerated at 2-8°C for up to 2 weeks. For long term storage store at -20°C in small aliquots to prevent freeze-thaw cycles.

Precautions

CUX1 Antibody (C-term) is for research use only and not for use in diagnostic or therapeutic procedures.

CUX1 Antibody (C-term) - Protein Information

Name CUX1

Synonyms CUTL1

Function May be involved in intra-Golgi retrograde transport.

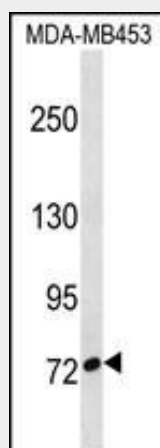
Cellular Location

Golgi apparatus membrane; Single-pass type IV membrane protein

CUX1 Antibody (C-term) - Protocols

Provided below are standard protocols that you may find useful for product applications.

- [Western Blot](#)
- [Blocking Peptides](#)
- [Dot Blot](#)
- [Immunohistochemistry](#)
- [Immunofluorescence](#)
- [Immunoprecipitation](#)
- [Flow Cytometry](#)
- [Cell Culture](#)

CUX1 Antibody (C-term) - Images

CUX1 Antibody (C-term)(Cat. #AP18776b) western blot analysis in MDA-MB453 cell line lysates (35ug/lane). This demonstrates the CUX1 antibody detected the CUX1 protein (arrow).

CUX1 Antibody (C-term) - Background

The protein encoded by this gene is a member of the homeodomain family of DNA binding proteins. It may regulate gene expression, morphogenesis, and differentiation and it may also play a role in the cell cycle progression. Several alternatively spliced transcript variants of this gene have been described, but the full-length nature of some of these variants has not been determined.

CUX1 Antibody (C-term) - References

Xu, H., et al. Hepatology 52(4):1431-1442(2010)
Ripka, S., et al. Neoplasia 12(8):659-667(2010)
Ripka, S., et al. Gut 59(8):1101-1110(2010)

Rose, J.E., et al. Mol. Med. 16 (7-8), 247-253 (2010) :
Davila, S., et al. Genes Immun. 11(3):232-238(2010)