

DCAF12L2 Antibody (C-term)
Affinity Purified Rabbit Polyclonal Antibody (Pab)
Catalog # AP18777b**Specification**

DCAF12L2 Antibody (C-term) - Product Information

Application	WB,E
Primary Accession	Q5VW00
Other Accession	Q8BGW4 , NP_001013650.1
Reactivity	Human
Predicted	Mouse
Host	Rabbit
Clonality	Polyclonal
Isotype	Rabbit IgG
Calculated MW	50803
Antigen Region	312-338

DCAF12L2 Antibody (C-term) - Additional Information**Gene ID** 340578**Other Names**

DDB1- and CUL4-associated factor 12-like protein 2, WD repeat-containing protein 40C, DCAF12L2, WDR40C

Target/Specificity

This DCAF12L2 antibody is generated from rabbits immunized with a KLH conjugated synthetic peptide between 312-338 amino acids from the C-terminal region of human DCAF12L2.

Dilution

WB~~1:1000

E~~Use at an assay dependent concentration.

Format

Purified polyclonal antibody supplied in PBS with 0.09% (W/V) sodium azide. This antibody is purified through a protein A column, followed by peptide affinity purification.

Storage

Maintain refrigerated at 2-8°C for up to 2 weeks. For long term storage store at -20°C in small aliquots to prevent freeze-thaw cycles.

Precautions

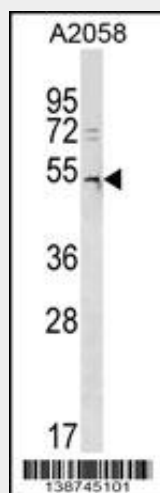
DCAF12L2 Antibody (C-term) is for research use only and not for use in diagnostic or therapeutic procedures.

DCAF12L2 Antibody (C-term) - Protein Information**Name** DCAF12L2

Synonyms WDR40C**DCAF12L2 Antibody (C-term) - Protocols**

Provided below are standard protocols that you may find useful for product applications.

- [Western Blot](#)
- [Blocking Peptides](#)
- [Dot Blot](#)
- [Immunohistochemistry](#)
- [Immunofluorescence](#)
- [Immunoprecipitation](#)
- [Flow Cytometry](#)
- [Cell Culture](#)

DCAF12L2 Antibody (C-term) - Images

DCAF12L2 Antibody (C-term)(Cat. #AP18777b) western blot analysis in A2058 cell line lysates (35ug/lane). This demonstrates the DCAF12L2 antibody detected the DCAF12L2 protein (arrow).

DCAF12L2 Antibody (C-term) - Background

This gene encodes a member of the WD repeat protein family. WD repeats are minimally conserved regions of approximately 40 amino acids typically bracketed by Gly-His and Trp-Asp (GH-WD), which may facilitate formation of heterotrimeric or multi-protein complexes. Members of this family are involved in a variety of cellular processes, including cell cycle progression, signal transduction, apoptosis, and gene regulation. This gene appears to represent an intronless retrocopy of a related multi-exon gene located on chromosome 9. However, the CDS of this intronless gene remains intact, it is conserved in other mammalian species, it is known to be transcribed, and it is therefore thought to encode a functional protein.

DCAF12L2 Antibody (C-term) - References

Jin, J., et al. Mol. Cell 23(5):709-721(2006)