

EFCAB10 Antibody (C-term)
Affinity Purified Rabbit Polyclonal Antibody (Pab)
Catalog # AP18782b**Specification**

EFCAB10 Antibody (C-term) - Product Information

Application	WB,E
Primary Accession	A6NFE3
Reactivity	Human
Host	Rabbit
Clonality	Polyclonal
Isotype	Rabbit IgG
Calculated MW	14721
Antigen Region	97-123

EFCAB10 Antibody (C-term) - Additional Information**Gene ID** 100130771**Other Names**

EF-hand calcium-binding domain-containing protein 10, EFCAB10

Target/Specificity

This EFCAB10 antibody is generated from rabbits immunized with a KLH conjugated synthetic peptide between 97-123 amino acids from the C-terminal region of human EFCAB10.

Dilution

WB~~1:1000

E~~Use at an assay dependent concentration.

Format

Purified polyclonal antibody supplied in PBS with 0.09% (W/V) sodium azide. This antibody is purified through a protein A column, followed by peptide affinity purification.

Storage

Maintain refrigerated at 2-8°C for up to 2 weeks. For long term storage store at -20°C in small aliquots to prevent freeze-thaw cycles.

Precautions

EFCAB10 Antibody (C-term) is for research use only and not for use in diagnostic or therapeutic procedures.

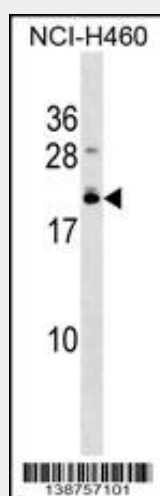
EFCAB10 Antibody (C-term) - Protein Information**Name** EFCAB10

EFCAB10 Antibody (C-term) - Protocols

Provided below are standard protocols that you may find useful for product applications.

- [Western Blot](#)
- [Blocking Peptides](#)
- [Dot Blot](#)
- [Immunohistochemistry](#)
- [Immunofluorescence](#)
- [Immunoprecipitation](#)
- [Flow Cytometry](#)
- [Cell Culture](#)

EFCAB10 Antibody (C-term) - Images



EFCAB10 Antibody (C-term)(Cat. #AP18782b) western blot analysis in NCI-H460 cell line lysates (35ug/lane). This demonstrates the EFCAB10 antibody detected the EFCAB10 protein (arrow).

EFCAB10 Antibody (C-term) - Background

The function of this protein remains unknown.