

ELFN1 Antibody (C-term)
Affinity Purified Rabbit Polyclonal Antibody (Pab)
Catalog # AP18783b**Specification**

ELFN1 Antibody (C-term) - Product Information

Application	WB,E
Primary Accession	P0C7U0
Other Accession	Q68FM6 , Q5R3F8 , Q8C8T7
Reactivity	Human
Predicted	Mouse
Host	Rabbit
Clonality	Polyclonal
Isotype	Rabbit IgG
Calculated MW	90477
Antigen Region	766-792

ELFN1 Antibody (C-term) - Additional Information**Gene ID** 392617**Other Names**

Protein ELFN1, Extracellular leucine-rich repeat and fibronectin type-III domain-containing protein 1, Protein phosphatase 1 regulatory subunit 28, ELFN1, PPP1R28

Target/Specificity

This ELFN1 antibody is generated from rabbits immunized with a KLH conjugated synthetic peptide between 766-792 amino acids from the C-terminal region of human ELFN1.

Dilution

WB~~1:1000

E~~Use at an assay dependent concentration.

Format

Purified polyclonal antibody supplied in PBS with 0.09% (W/V) sodium azide. This antibody is purified through a protein A column, followed by peptide affinity purification.

Storage

Maintain refrigerated at 2-8°C for up to 2 weeks. For long term storage store at -20°C in small aliquots to prevent freeze-thaw cycles.

Precautions

ELFN1 Antibody (C-term) is for research use only and not for use in diagnostic or therapeutic procedures.

ELFN1 Antibody (C-term) - Protein Information**Name** ELFN1

Synonyms PPP1R28

Function Postsynaptic protein that regulates circuit dynamics in the central nervous system by modulating the temporal dynamics of interneuron recruitment. Specifically present in excitatory synapses onto oriens-lacunosum molecular (OLM) interneurons and acts as a regulator of presynaptic release probability to direct the formation of highly facilitating pyramidal-OLM synapses (By similarity). Inhibits phosphatase activity of protein phosphatase 1 (PP1) complexes.

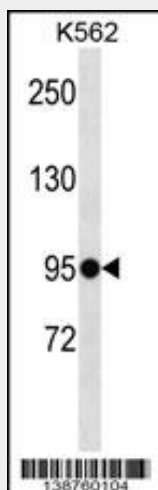
Cellular Location

Membrane; Single-pass type I membrane protein. Cell projection, dendrite. Note=Localizes to excitatory synapses onto somatostatin (Sst)-containing oriens-lacunosum molecular (O-LM) interneurons

ELFN1 Antibody (C-term) - Protocols

Provided below are standard protocols that you may find useful for product applications.

- [Western Blot](#)
- [Blocking Peptides](#)
- [Dot Blot](#)
- [Immunohistochemistry](#)
- [Immunofluorescence](#)
- [Immunoprecipitation](#)
- [Flow Cytometry](#)
- [Cell Culture](#)

ELFN1 Antibody (C-term) - Images

ELFN1 Antibody (C-term)(Cat. #AP18783b) western blot analysis in K562 cell line lysates (35ug/lane). This demonstrates the ELFN1 antibody detected the ELFN1 protein (arrow).

ELFN1 Antibody (C-term) - Background

The function of this protein remains unknown.