

LIMS3/LIMS3L Antibody (Center)
Affinity Purified Rabbit Polyclonal Antibody (Pab)
Catalog # AP18789C**Specification**

LIMS3/LIMS3L Antibody (Center) - Product Information

Application	WB,E
Primary Accession	POCW19
Other Accession	POCW20 , NP_001192217.1
Reactivity	Human
Host	Rabbit
Clonality	Polyclonal
Isotype	Rabbit IgG
Calculated MW	13251
Antigen Region	28-54

LIMS3/LIMS3L Antibody (Center) - Additional Information**Gene ID** 96626**Other Names**

LIM and senescent cell antigen-like-containing domain protein 3, Particularly interesting new Cys-His protein 3, PINCH-3, LIMS3, PINCH3

Target/Specificity

This LIMS3/LIMS3L antibody is generated from rabbits immunized with a KLH conjugated synthetic peptide between 28-54 amino acids from the Central region of human LIMS3/LIMS3L.

Dilution

WB~~1:1000

E~~Use at an assay dependent concentration.

Format

Purified polyclonal antibody supplied in PBS with 0.09% (W/V) sodium azide. This antibody is purified through a protein A column, followed by peptide affinity purification.

Storage

Maintain refrigerated at 2-8°C for up to 2 weeks. For long term storage store at -20°C in small aliquots to prevent freeze-thaw cycles.

Precautions

LIMS3/LIMS3L Antibody (Center) is for research use only and not for use in diagnostic or therapeutic procedures.

LIMS3/LIMS3L Antibody (Center) - Protein Information**Name** LIMS3

Synonyms PINCH3**Cellular Location**

Cytoplasm.

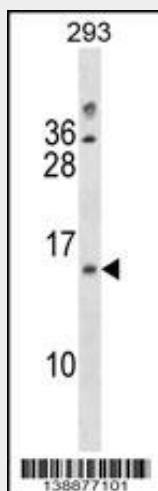
Tissue Location

Detected in testis. {ECO:0000269|Ref.1}.

LIMS3/LIMS3L Antibody (Center) - Protocols

Provided below are standard protocols that you may find useful for product applications.

- [Western Blot](#)
- [Blocking Peptides](#)
- [Dot Blot](#)
- [Immunohistochemistry](#)
- [Immunofluorescence](#)
- [Immunoprecipitation](#)
- [Flow Cytometry](#)
- [Cell Culture](#)

LIMS3/LIMS3L Antibody (Center) - Images

LIMS3/LIMS3L Antibody (Center)(Cat. #AP18789c) western blot analysis in 293 cell line lysates (35ug/lane). This demonstrates the LIMS3/LIMS3L antibody detected the LIMS3/LIMS3L protein (arrow).

LIMS3/LIMS3L Antibody (Center) - Background

The function of this protein remains unknown.