

LRRC14B Antibody (N-term)
Affinity Purified Rabbit Polyclonal Antibody (Pab)
Catalog # AP18791a

Specification

LRRC14B Antibody (N-term) - Product Information

Application	WB,E
Primary Accession	A6NHZ5
Reactivity	Human
Host	Rabbit
Clonality	Polyclonal
Isotype	Rabbit IgG
Calculated MW	56758
Antigen Region	55-81

LRRC14B Antibody (N-term) - Additional Information

Gene ID 389257

Other Names

Leucine-rich repeat-containing protein 14B, LRRC14B

Target/Specificity

This LRRC14B antibody is generated from rabbits immunized with a KLH conjugated synthetic peptide between 55-81 amino acids from the N-terminal region of human LRRC14B.

Dilution

WB~~1:1000

E~~Use at an assay dependent concentration.

Format

Purified polyclonal antibody supplied in PBS with 0.09% (W/V) sodium azide. This antibody is purified through a protein A column, followed by peptide affinity purification.

Storage

Maintain refrigerated at 2-8°C for up to 2 weeks. For long term storage store at -20°C in small aliquots to prevent freeze-thaw cycles.

Precautions

LRRC14B Antibody (N-term) is for research use only and not for use in diagnostic or therapeutic procedures.

LRRC14B Antibody (N-term) - Protein Information

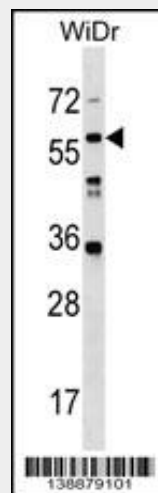
Name LRRC14B ([HGNC:37268](#))

LRRC14B Antibody (N-term) - Protocols

Provided below are standard protocols that you may find useful for product applications.

- [Western Blot](#)
- [Blocking Peptides](#)
- [Dot Blot](#)
- [Immunohistochemistry](#)
- [Immunofluorescence](#)
- [Immunoprecipitation](#)
- [Flow Cytometry](#)
- [Cell Culture](#)

LRRC14B Antibody (N-term) - Images



LRRC14B Antibody (N-term)(Cat. #AP18791a) western blot analysis in WiDr cell line lysates (35ug/lane). This demonstrates the LRRC14B antibody detected the LRRC14B protein (arrow).

LRRC14B Antibody (N-term) - Background

The function of this protein remains unknown.