

**MCF2L Antibody (C-term)**  
**Affinity Purified Rabbit Polyclonal Antibody (Pab)**  
**Catalog # AP18793B**

**Specification**

---

**MCF2L Antibody (C-term) - Product Information**

Application	WB,E
Primary Accession	<a href="#">O15068</a>
Other Accession	<a href="#">NP_001106203.1</a>
Reactivity	Human
Host	Rabbit
Clonality	Polyclonal
Isotype	Rabbit IgG
Calculated MW	128109
Antigen Region	1049-1075

**MCF2L Antibody (C-term) - Additional Information**

**Gene ID** 23263

**Other Names**

Guanine nucleotide exchange factor DBS, DBL's big sister, MCF2-transforming sequence-like protein, MCF2L, KIAA0362

**Target/Specificity**

This MCF2L antibody is generated from rabbits immunized with a KLH conjugated synthetic peptide between 1049-1075 amino acids from the C-terminal region of human MCF2L.

**Dilution**

WB~~1:1000

E~~Use at an assay dependent concentration.

**Format**

Purified polyclonal antibody supplied in PBS with 0.09% (W/V) sodium azide. This antibody is purified through a protein A column, followed by peptide affinity purification.

**Storage**

Maintain refrigerated at 2-8°C for up to 2 weeks. For long term storage store at -20°C in small aliquots to prevent freeze-thaw cycles.

**Precautions**

MCF2L Antibody (C-term) is for research use only and not for use in diagnostic or therapeutic procedures.

**MCF2L Antibody (C-term) - Protein Information**

**Name** MCF2L

**Synonyms** KIAA0362, OST {ECO:0000303|PubMed:151576}

**Function** Guanine nucleotide exchange factor that catalyzes guanine nucleotide exchange on RHOA and CDC42, and thereby contributes to the regulation of RHOA and CDC42 signaling pathways (By similarity). Seems to lack activity with RAC1. Becomes activated and highly tumorigenic by truncation of the N-terminus (By similarity). Isoform 5 activates CDC42 (PubMed:[15157669](#)).

#### **Cellular Location**

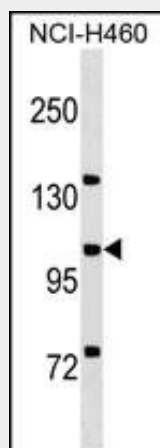
[Isoform 5]: Cytoplasm. Cell membrane; Peripheral membrane protein; Cytoplasmic side  
Cytoplasm {ECO:0000250|UniProtKB:Q64096}. Cell membrane  
{ECO:0000250|UniProtKB:Q64096}; Peripheral membrane protein  
{ECO:0000250|UniProtKB:Q64096}; Cytoplasmic side {ECO:0000250|UniProtKB:Q64096}

#### **MCF2L Antibody (C-term) - Protocols**

Provided below are standard protocols that you may find useful for product applications.

- [Western Blot](#)
- [Blocking Peptides](#)
- [Dot Blot](#)
- [Immunohistochemistry](#)
- [Immunofluorescence](#)
- [Immunoprecipitation](#)
- [Flow Cytometry](#)
- [Cell Culture](#)

#### **MCF2L Antibody (C-term) - Images**



MCF2L Antibody (C-term)(Cat. #AP18793b) western blot analysis in NCI-H460 cell line lysates (35ug/lane). This demonstrates the MCF2L antibody detected the MCF2L protein (arrow).

#### **MCF2L Antibody (C-term) - Background**

Guanine nucleotide exchange factor that potentially links pathways that signal through RAC1, RHOA and CDC42. Catalyzes guanine nucleotide exchange on RHOA and CDC42 and interacts specifically with the GTP-bound form of RAC1, suggesting that it functions as an effector of RAC1. May also participate in axonal transport in the brain. Becomes activated and highly tumorigenic by truncation of the N-terminus (By similarity). Isoform 5 activates CDC42.

**MCF2L Antibody (C-term) - References**

Rose, J.E., et al. Mol. Med. 16 (7-8), 247-253 (2010) :  
Takefuji, M., et al. J. Hum. Genet. 55(1):42-49(2010)  
Ieguchi, K., et al. J. Biol. Chem. 282(32):23296-23305(2007)  
Yang, Q., et al. BMC Med. Genet. 8 SUPPL 1, S12 (2007) :  
Kostenko, E.V., et al. J. Biol. Chem. 280(4):2807-2817(2005)