

IFI44L Antibody (C-term)
Affinity Purified Rabbit Polyclonal Antibody (Pab)
Catalog # AP18801b

Specification

IFI44L Antibody (C-term) - Product Information

Application	WB,E
Primary Accession	Q53G44
Other Accession	NP_006811.2
Reactivity	Human
Host	Rabbit
Clonality	Polyclonal
Isotype	Rabbit IgG
Antigen Region	151-180

IFI44L Antibody (C-term) - Additional Information

Gene ID 10964

Other Names

Interferon-induced protein 44-like, IFI44L, C1orf29

Target/Specificity

This IFI44L antibody is generated from rabbits immunized with a KLH conjugated synthetic peptide between amino acid positions 151-180 of human IFI44L.

Dilution

WB~~1:2000

E~~Use at an assay dependent concentration.

Format

Purified polyclonal antibody supplied in PBS with 0.09% (W/V) sodium azide. This antibody is purified through a protein A column, followed by peptide affinity purification.

Storage

Maintain refrigerated at 2-8°C for up to 2 weeks. For long term storage store at -20°C in small aliquots to prevent freeze-thaw cycles.

Precautions

IFI44L Antibody (C-term) is for research use only and not for use in diagnostic or therapeutic procedures.

IFI44L Antibody (C-term) - Protein Information

Name IFI44L

Synonyms C1orf29

Function Type I interferon-stimulated gene (ISG) that plays a critical role in antiviral and antibacterial activity (PubMed:[34722780](#)). During bacterial infection, promotes macrophage differentiation and facilitates inflammatory cytokine secretion (PubMed:[34722780](#)). Plays a role in the control of respiratory syncytial virus/RSV infection, reducing the ability of the virus to replicate (PubMed:[32611756](#)). Exhibits a low antiviral activity against hepatitis C virus (PubMed:[21478870](#)). Also acts as a feedback regulator of IFN responses by negatively regulating IKBKB and IKBKE kinase activities through interaction with FKBP5 (PubMed:[31434731](#)).

Cellular Location

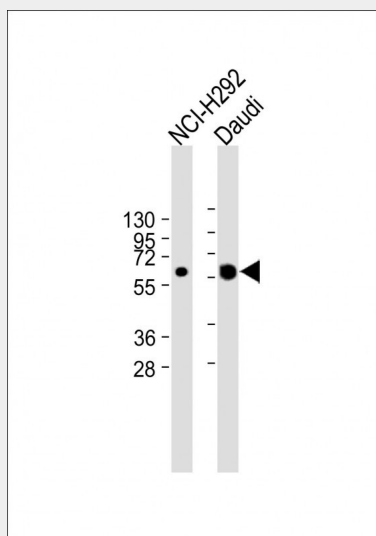
Cytoplasm.

IFI44L Antibody (C-term) - Protocols

Provided below are standard protocols that you may find useful for product applications.

- [Western Blot](#)
- [Blocking Peptides](#)
- [Dot Blot](#)
- [Immunohistochemistry](#)
- [Immunofluorescence](#)
- [Immunoprecipitation](#)
- [Flow Cytometry](#)
- [Cell Culture](#)

IFI44L Antibody (C-term) - Images



All lanes : Anti-IFI44L Antibody (C-term) at 1:2000 dilution Lane 1: NCI-H292 whole cell lysate Lane 2: Daudi whole cell lysate Lysates/proteins at 20 µg per lane. Secondary Goat Anti-Rabbit IgG, (H+L), Peroxidase conjugated at 1/10000 dilution. Predicted band size : 51 kDa Blocking/Dilution buffer: 5% NFDM/TBST.

IFI44L Antibody (C-term) - Background

The function of this protein remains unknown.

IFI44L Antibody (C-term) - References

Davila, S., et al. Genes Immun. 11(3):232-238(2010)