

NPY1R Antibody (Center)
Affinity Purified Rabbit Polyclonal Antibody (Pab)
Catalog # AP18805C**Specification**

NPY1R Antibody (Center) - Product Information

Application	WB,E
Primary Accession	P25929
Other Accession	O02835 , NP_000900.1
Reactivity	Human
Predicted	Pig
Host	Rabbit
Clonality	Polyclonal
Isotype	Rabbit IgG
Calculated MW	44392
Antigen Region	231-260

NPY1R Antibody (Center) - Additional Information**Gene ID** 4886**Other Names**

Neuropeptide Y receptor type 1, NPY1-R, NPY1R, NPYR, NPY1

Target/Specificity

This NPY1R antibody is generated from rabbits immunized with a KLH conjugated synthetic peptide between 231-260 amino acids from the Central region of human NPY1R.

Dilution

WB~~1:1000

E~~Use at an assay dependent concentration.

Format

Purified polyclonal antibody supplied in PBS with 0.09% (W/V) sodium azide. This antibody is purified through a protein A column, followed by peptide affinity purification.

Storage

Maintain refrigerated at 2-8°C for up to 2 weeks. For long term storage store at -20°C in small aliquots to prevent freeze-thaw cycles.

Precautions

NPY1R Antibody (Center) is for research use only and not for use in diagnostic or therapeutic procedures.

NPY1R Antibody (Center) - Protein Information**Name** NPY1R

Synonyms NPYR, NPY1

Function Receptor for neuropeptide Y and peptide YY. The rank order of affinity of this receptor for pancreatic polypeptides is NPY > [Pro-34] PYY, PYY and [Leu-31, Pro-34] NPY > NPY (2-36) > [Ile-31, Gln-34] PP and PYY (3-36) > PP > NPY free acid.

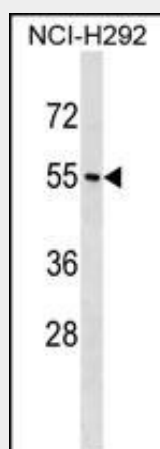
Cellular Location

Cell membrane; Multi-pass membrane protein.

NPY1R Antibody (Center) - Protocols

Provided below are standard protocols that you may find useful for product applications.

- [Western Blot](#)
- [Blocking Peptides](#)
- [Dot Blot](#)
- [Immunohistochemistry](#)
- [Immunofluorescence](#)
- [Immunoprecipitation](#)
- [Flow Cytometry](#)
- [Cell Culture](#)

NPY1R Antibody (Center) - Images

NPY1R Antibody (Center)(Cat. #AP18805c) western blot analysis in NCI-H292 cell line lysates (35ug/lane). This demonstrates the NPY1R antibody detected the NPY1R protein (arrow).

NPY1R Antibody (Center) - Background

Neuropeptide Y (NPY; MIM 162640) is one of the most abundant neuropeptides in the mammalian nervous system and exhibits a diverse range of important physiologic activities, including effects on psychomotor activity, food intake, regulation of central endocrine secretion, and potent vasoactive effects on the cardiovascular system. Two major subtypes of NPY (Y1 and Y2) have been defined by pharmacologic criteria. NPY receptors, such as NPY1R, have been identified in a variety of tissues, including brain, spleen, small intestine, kidney, testis, placenta, and aortic smooth muscle (Herzog et al., 1992 [PubMed 1321422]).

NPY1R Antibody (Center) - References

Bailey, S.D., et al. Diabetes Care 33(10):2250-2253(2010)
Kim, H.Y., et al. BMB Rep 43(8):547-553(2010)
Pinheiro, A.P., et al. Am. J. Med. Genet. B Neuropsychiatr. Genet. 153B (5), 1070-1080 (2010) :
Naukkarinen, J., et al. PLoS Genet. 6 (6), E1000976 (2010) :
Talmud, P.J., et al. Am. J. Hum. Genet. 85(5):628-642(2009)